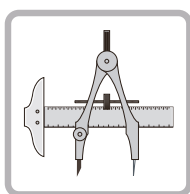




# BPT-Pro4

Plug-in for Adobe Illustrator



## Manual



## Terms and conditions:

Before using BPT-Pro, please read through each term and conditions written below. By using the BPT-Pro Package we judge that you have read and understood the following information.

### 1. License

Basically one license for BPT-Pro qualifies you to use one application, which means that one license allows you to install the software on one machine. If you want to use the software license for other purposes, it is illegal and you could be asked for compensation.

### 2. Warranty of use

It is not possible for us to insure against any accidents that could happen when users use BPT-Pro, and as such, we regard your use of the software as agreement that there have been no problems, unless you stop using the software while still using the demonstration version.

## System Requirements:

Macintosh OS X 10.2~

Windows OS XP ~

Adobe Illustrator 10.0 / CS / CS2 / CS3 / CS4 / CS5 / CS6 / CC

In some cases there may be a malfunctioning of BPT-Pro when used in conjunction with, or at the same time as other companies Adobe Illustrator Plug-ins, and as such the program may not work properly. Please bear with us.

# Install

Please exit Adobe Illustrator before running the install program.

On Macintosh, double click the Installer icon in BPT-Pro folder. On Windows, double click setup.exe in a folder named the Illustrator's version you're installing the plug-in.

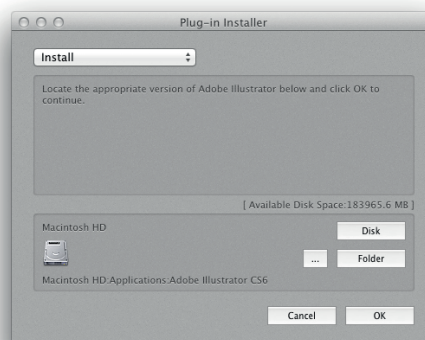
## Macintosh



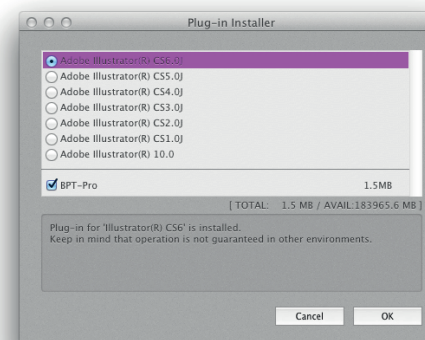
## Windows



The installer will be launched and then click OK. The install program will automatically find out the compatible version of Illustrator from your disc as indicated by the red dotted line on the picture. Then please make sure that the version and its location are right. If applicable version is not found or if there are several versions available, select directly the right version from your disc or folder. Click OK to proceed.



Please make sure that the right version of Illustrator and BPT-Pro are checked. Click OK to complete the installation.



## [Manual Installation]

Open a folder named the Illustrator version you're installing the plug-in. Move out BPT-Pro.aip from the folder and drop them directly into the plug-in folder of Adobe Illustrator. Then move out BPT-Pro.ini as well and drop it into Prefs folder of Adobe Illustrator.



\* ) Where is the Prefs Folder?

Macintosh: user / documents / Adobe / Illustrator / Prefs

Windows: My Documents / Adobe / Illustrator / Prefs

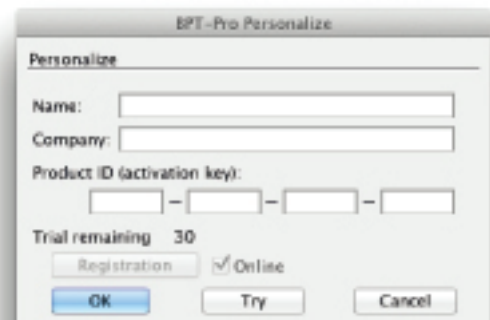


## Personalization

When you start Illustrator for the first time after installation of BPT-Pro, a dialog box will appear as in the picture on the right. Enter your name, organization(such as company, school) and Product ID(activation key). Click OK to complete personalization.

### [About trial]

If you use the plug-in as a trial version, click Try button. You can use the plug-in with all functions for 30 times.



Purchase BPT-Pro4 at our online store:

[https://www.baby-universe.co.jp/shopping\\_eng/index.jsp?dir=%2F1%2F.25](https://www.baby-universe.co.jp/shopping_eng/index.jsp?dir=%2F1%2F.25)



## BPT-Pro Overview

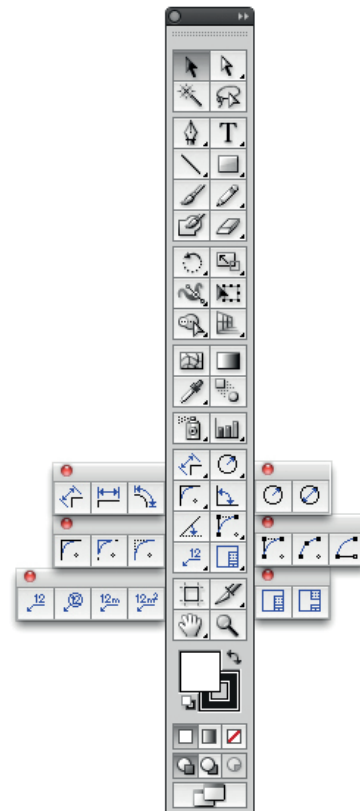
When you launch Adobe Illustrator, you will find 19 tools in 8 types of BPT-Pro in the lower part of the Tool Box(like in the picture on the right).

Also, you can see BPT Pro's information palette from "BPT-Pro Information" in Window menu. The palette shows information and has various functions for snapping that will make BPT-Pro more convenient.

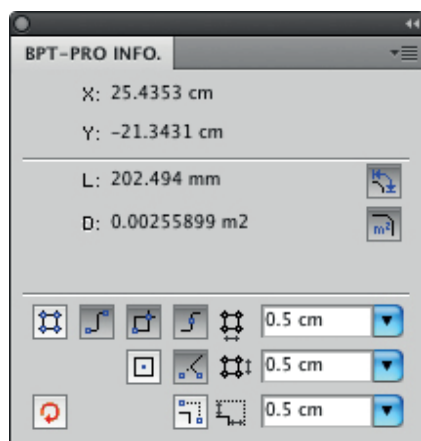
Additionally, you can change settings of the dimension lines and the reduced scale in the BPT-Pro Settings dialog. It is in the Preferences in Illustrator menu.

This is the overview of BPT-Pro.  
Please find your own TIPS by using these functions.  
We hope you enjoy working with BPT-Pro!

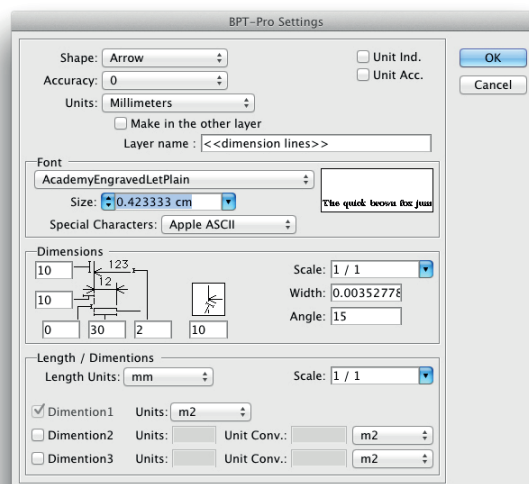
### BPT Tool



### BPT Information palette

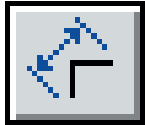


### BPT Settings





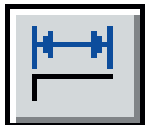
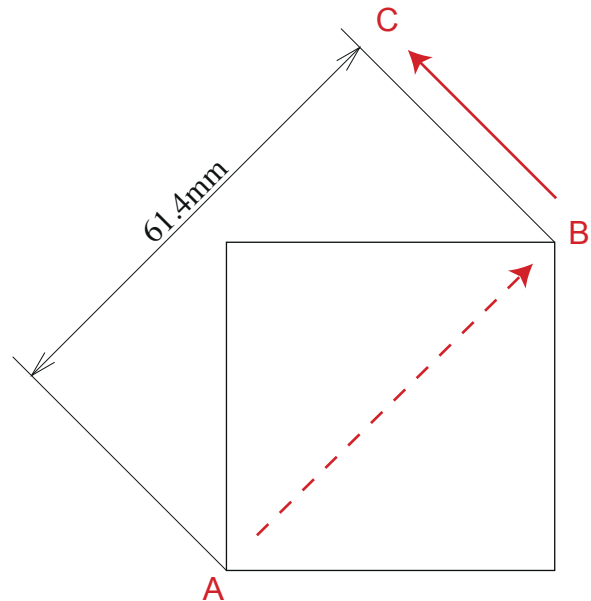
## Dimension Tools (BPT Tool)



### Oblique Dimension Tool

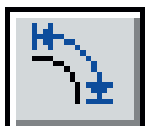
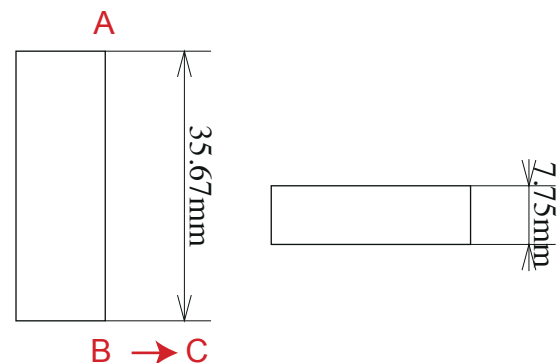
This tool is to measure the oblique dimensions and show the dimensions as indicated in the right picture.

Drag your mouse from A to B and release. Then move the mouse to C and click. If you need accurate measurement, turn on fit buttons in BPT information palette to snap to the paths and anchor points. In addition, if you drag your mouse from B to A, the dimension shows oppositely.



### Straight Dimension Tool

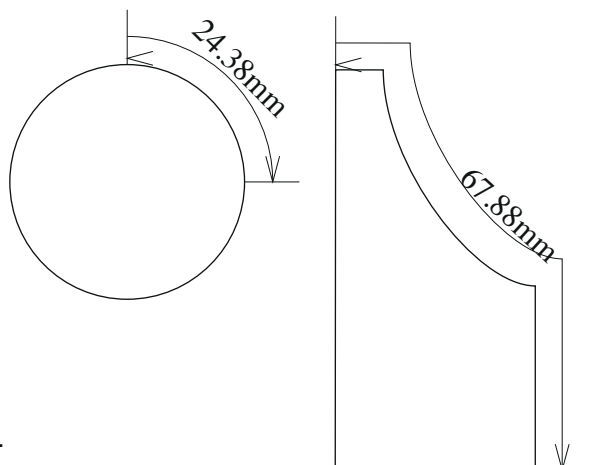
This tool can measure and show the dimensions vertical or horizontal. The method of use is same as the Oblique Dimension Tool above. When the dimension is too narrow to show the arrows, the arrows are shown outside as indicated in the right picture. You can measure more accurately if you turn on fit function and grid function in the BPT information palette.



### Curve Dimension Tool

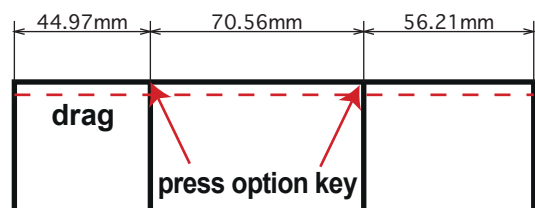
This tool can measure and show the dimensions of arcs and curved lines. Like the Straight Dimension Tools above, this tool doesn't need anchor points when measuring. Also, as indicated in the right picture, it can measure the objects with both curves and straight lines.

Though dimension lines of arcs are accurate offset lines, dimension lines of curves might not look smooth. But the numerical values are correct.

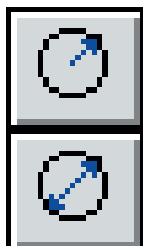


### NEW : Measuring plural lines

This new function is to measure plural dimensions and show the dimension lines at once. The method of use is basically same as other dimension tools. By pressing option key on any point, the dimension line is added. (Please do not press option key on the final point.)



## Radius / Diameter Tools (BPT Tool)

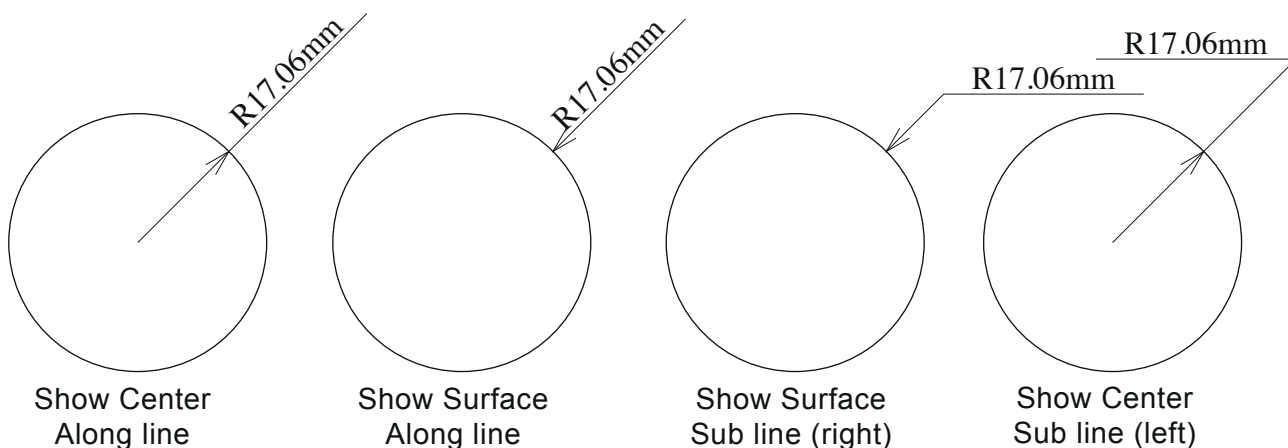
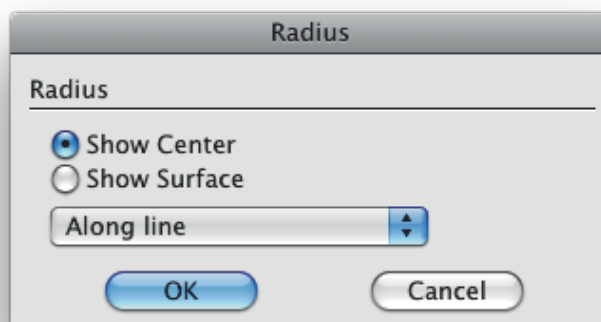
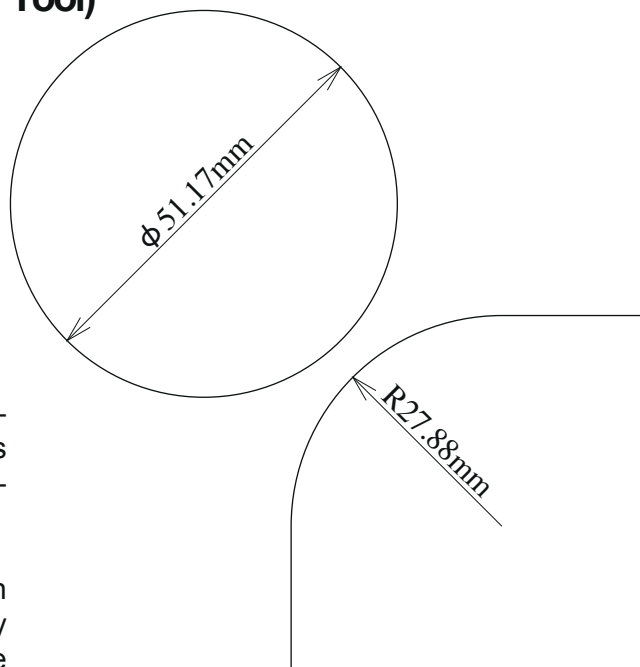


**Radius Tool**

**Diameter Tool**

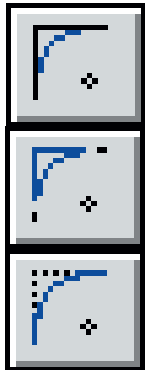
Radius and Diameter tools are used for dimensioning the radius or diameter of perfect circles and arcs (part of a perfect circle). (The functions do not support free curves).

To use them, click the top of the object's path and move your mouse. With pressing shift key when moving your mouse, the angle can be set to vertical, horizontal, and 45-degree. Double clicking the icon of the tools, a setting dialog will appear like the right picture. By combining settings, you can create various types of dimensioning as shown in the pictures below. When using these tools, click and drag your mouse from the top of the path to the direction you want to indicate the dimension, then click. You can create dimension lines just suitable for your design.





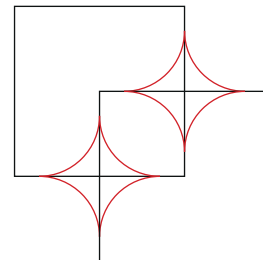
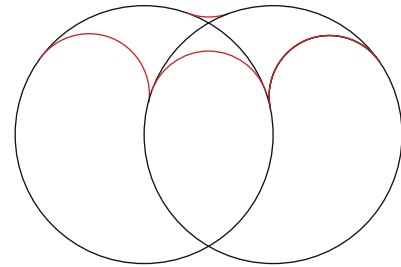
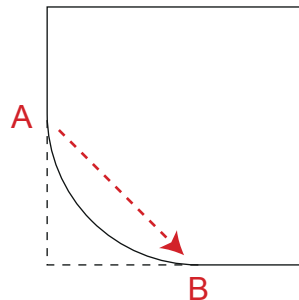
## Fillet Tools(BPT Tool)



**Addition type**

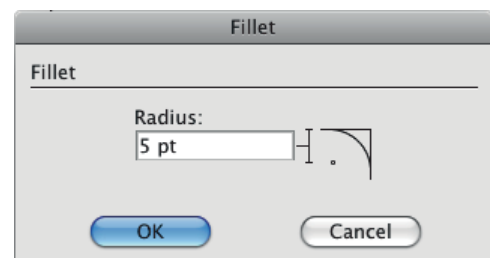
**Separate type**

**Replace type**

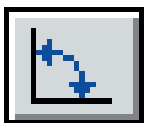


Fillet tools are used to round corners. Drag your mouse from A to B like in the picture above and release your mouse, then the corner becomes round. There are three types of fillet tools. One is the Addition type, it adds a new arc and the corner is left. Another is the Separate type, this tool divides the corner by an arc. Other one is Replace type, this tool deletes the corner and replace it with an arc.

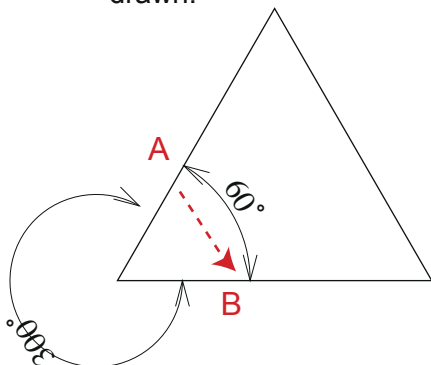
By double clicking icons of the fillet tools, a setting dialog appears as shown in the right picture. This setting is used to change the radius of the arc. You can use this setting to set the point of intersection of two objects as well.



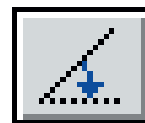
## Angle Tool



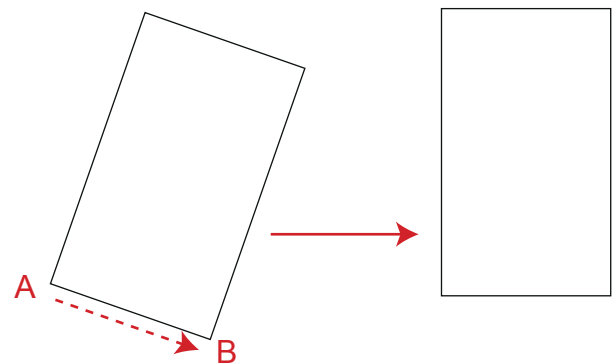
The Angle Tool draws object's angle as shown in the picture below. By dragging your mouse on two paths with corners and move to inside, the inner angle will be calculated and drawn. If you move your mouse to outside, outside angle will be drawn.



## Slant Tool



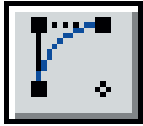
The Slant tool rotates slanted objects. Select a slanted object and drag its path.





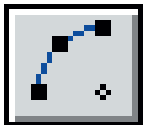
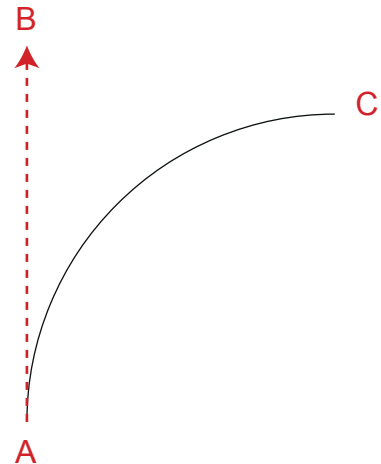


## Arc Tools (BPT Tool)



### Tangential Line

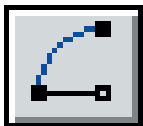
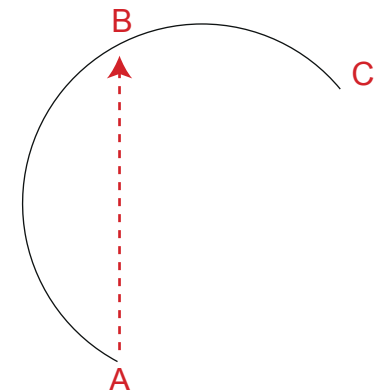
To draw a basic arc (Contact Line and a Point), first click the mouse at point A and drag to point B like in the right picture. Release the mouse at point B, then move the mouse to point C and click there. An basic arc is drawn. To draw an accurate arc, press the shift key when moving your mouse. Then the direction changes to vertical, horizontal and 45-degrees. In addition, set snap in the BPT-Pro information palette for more accurate arcs.



### Three Points

To draw an arc with three vertices, drag your mouse from A to B as indicated in the right picture. Then release your mouse at B and move your mouse to C. Click at C and the arc is drawn. This tool's trait is that the point B is fixed. The arc is drawn through three points, ABC.

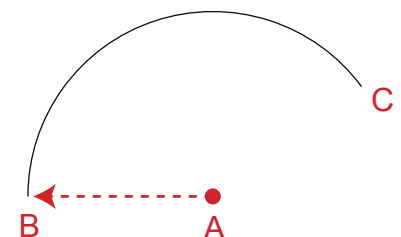
By pressing shift key when moving your mouse, you can control the angle to vertical, horizontal and 45-degrees.



### Center and Two Points

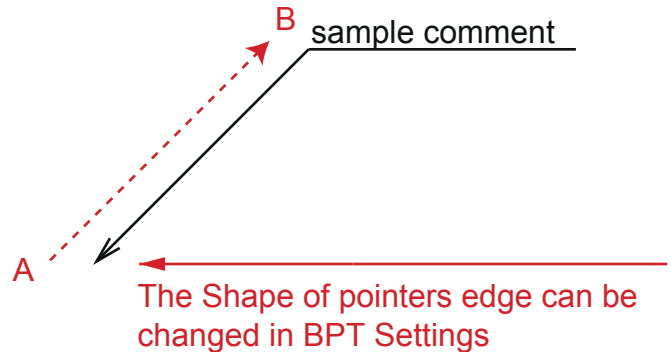
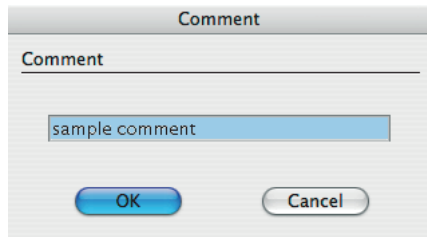
To draw an arc "Center and Two points", drag your mouse from A(this point is the center of the arc) to B like in the right picture. Then release your mouse and move the mouse to C. Then click at C and an arc is drawn. This tool's trait is that you can decide the radius by dragging.

By pressing shift key when moving your mouse, you can control the angle to vertical, horizontal and 45-degrees.



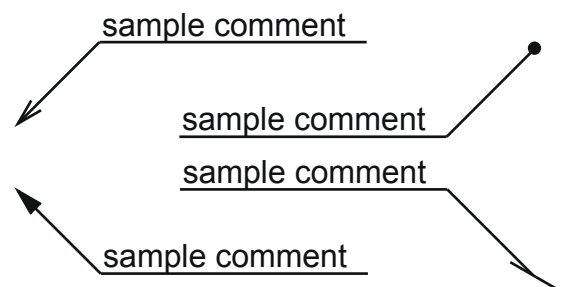


## Comment Tool (BPT Tool)

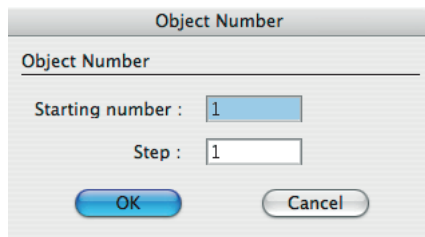


The comment tool is used to make comments on objects indicated by a line. By double clicking the Comment Tool icon, a dialog like above appears. Then You can edit the default comment.

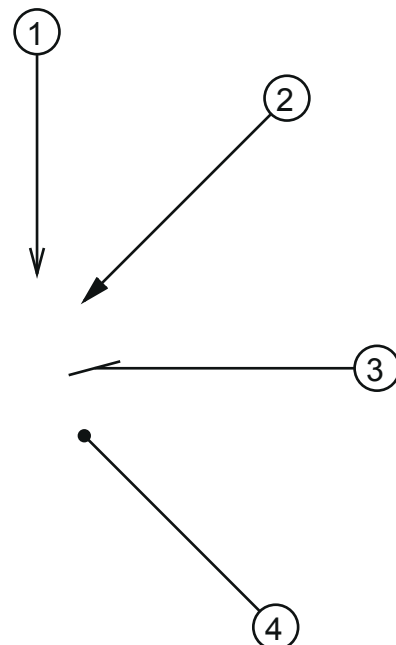
Click and drag from point A to B, and release the button. With the shift key, you can control the angle of the indication line vertically, horizontally and 45 degrees.



## Object Number Tool (BPT Tool)



This tool can be utilized when you want to number the objects in a document. The way to use this is the same as for the comment tool. By double clicking the “Object tool” button in the tool bar of Adobe Illustrator, the object number tool dialog box appears. In the box enter the starting number and steps. Steps means that as you add the numbers, the number used steps as much as the number in the step box.



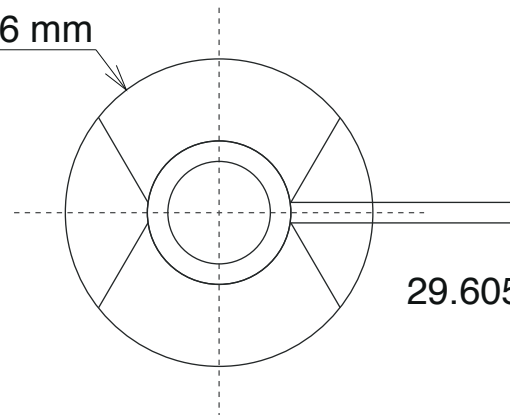


## Length Comment Tool (BPT Tool)



The Length tool is used to measure the length of objects indicated by a line. Click and drag from point A to B, and release the button. With the shift key, you can control the angle of the indication line vertically, horizontally and 45 degrees.

127.786 mm



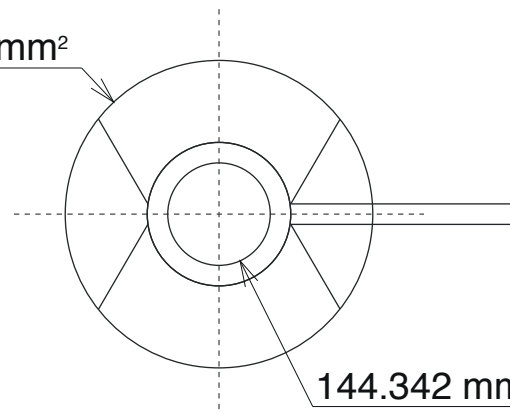
29.6058 mm

## Dimension Comment Tool (BPT Tool)



The Dimension tool is used to measure the dimension of objects indicated by a line. Click and drag from point A to B, and release the button. With the shift key, you can control the angle of the indication line vertically, horizontally and 45 degrees.

1299.76 mm<sup>2</sup>



144.342 mm<sup>2</sup>

## Schedule Tool (BPT Tool)



Bottom



Top + Bottom

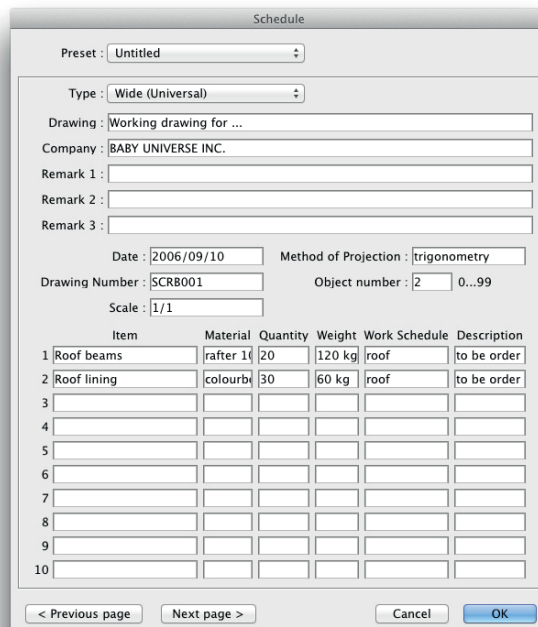
Schedule Tool draws a format for making plans and schedules.

1. Double clicking the “Shedule Tool” button, opens the Schedule Tool setting dialog box as shown. *\*The same content is applied to both “Bottom” and “Top+Bottom” styles.*

2. Then enter the items, materials, quantities, weight and work schedule. *\*If you need more lists, press the “Next” button to add lists.*

3. Press OK and drag your mouse to draw a table.

※To add/reduce the item row, please input a number in “Object number” box.

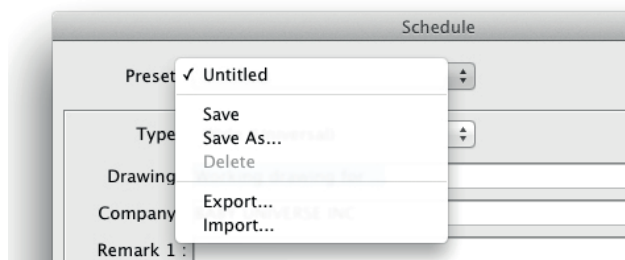


The dialog box is titled "Schedule". It contains the following fields and sections:

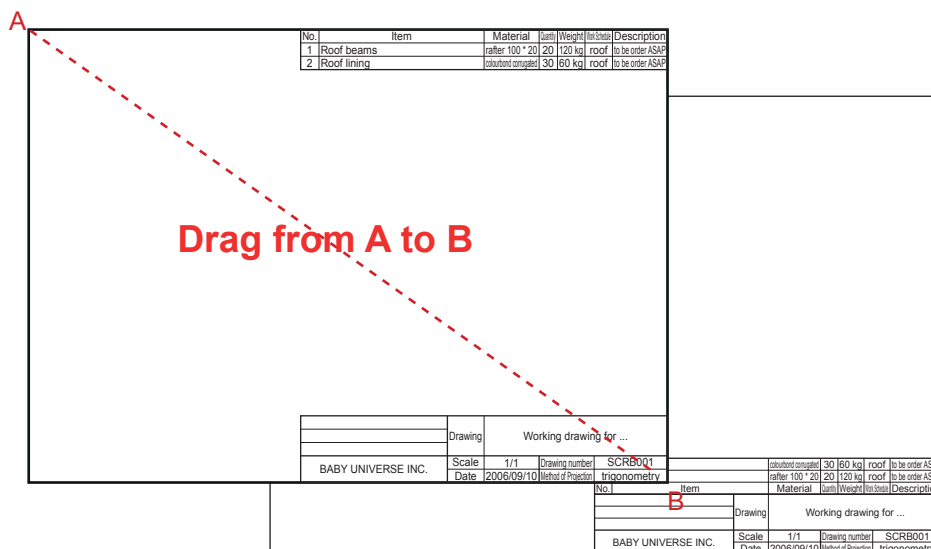
- Preset:** Untitled
- Type:** Wide (Universal)
- Drawing:** Working drawing for ...
- Company:** BABY UNIVERSE INC.
- Remark 1:**
- Remark 2:**
- Remark 3:**
- Date:** 2006/09/10
- Method of Projection:** trigonometry
- Drawing Number:** SCR8001
- Object number:** 2 0...99
- Scale:** 1/1
- Table:** A table with 6 columns: Item, Material, Quantity, Weight, Work Schedule, Description. It contains 10 rows. The first two rows are:
 

| Item          | Material              | Quantity | Weight | Work Schedule | Description      |
|---------------|-----------------------|----------|--------|---------------|------------------|
| 1 Roof beams  | rafter 100 * 20       | 20       | 120 kg | roof          | to be order ASAP |
| 2 Roof lining | colourbond corrugated | 30       | 60 kg  | roof          | to be order ASAP |
| 3             |                       |          |        |               |                  |
| 4             |                       |          |        |               |                  |
| 5             |                       |          |        |               |                  |
| 6             |                       |          |        |               |                  |
| 7             |                       |          |        |               |                  |
| 8             |                       |          |        |               |                  |
| 9             |                       |          |        |               |                  |
| 10            |                       |          |        |               |                  |
- Buttons:** < Previous page, Next page >, Cancel, OK

### Preset



You can save the setting as a preset. Also, export and import as CVS is available.



Continue→

## Practical use of Schedule Tool



**Bottom**



**Top + Bottom**

Two methods for practical use of Schedule Tool:

1. Complete the plan in Illustrator using BPT-Pro's tools

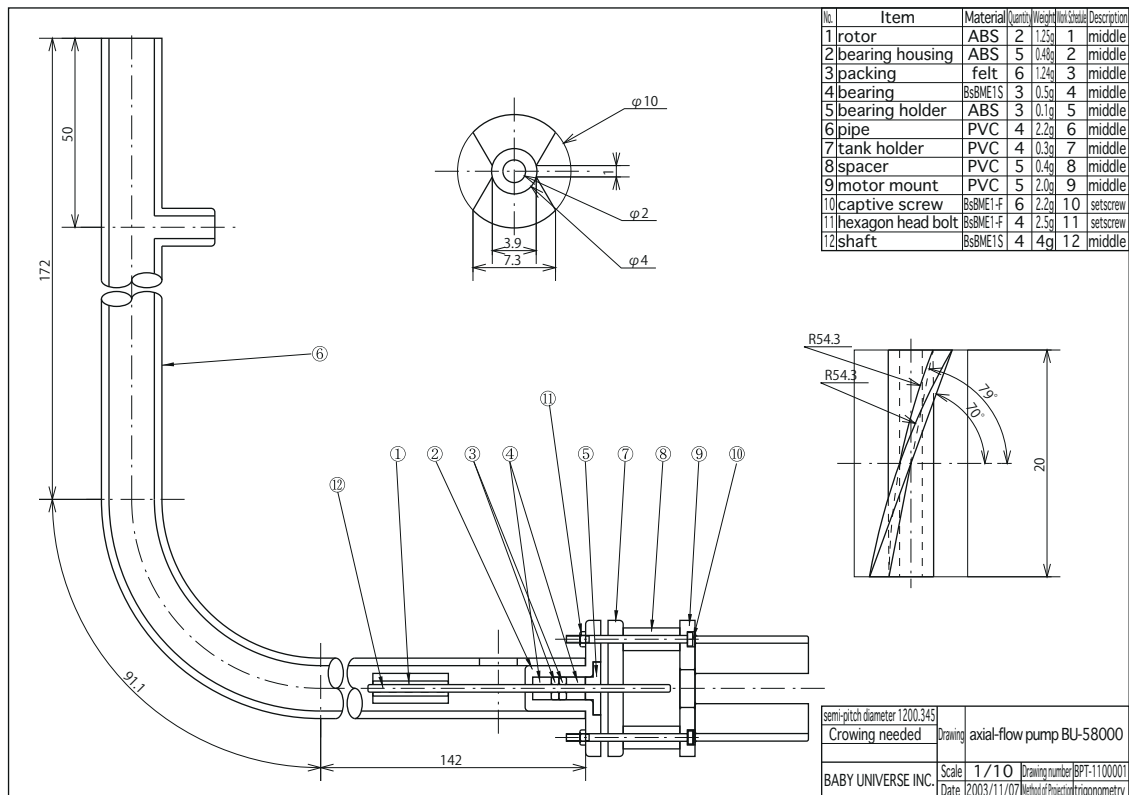
2. Import DXF made by CAD to Illustrator using our plug-in "EXDXF-Pro"(sold separately).

Also, you can merge these methods.

## Customize

Though we have two types of Schedule Tool and one type of content in BPT-Pro, we can customize this tool to fit your work(cost:from approx.\$600). Please feel free to ask us.

Email: [info\\_eng@baby-universe.co.jp](mailto:info_eng@baby-universe.co.jp)





## BPT Information

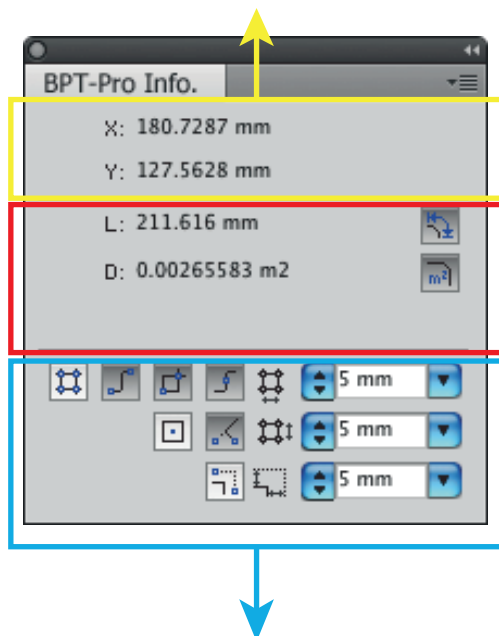
Just like the Illustrator's information palette, the information of each tool of BPT-Pro is shown here when you're using it. The palette can be open from WIndow menu.

X: Distance from origin to X-axis direction.

Y: Distance from origin to Y-axis direction.

W: Distance moved to the X-axis direction.

H: Distance moved to the Y-axis direction.



### Length Measurement Tool

This tool measures any segments(including curves) accurately and instantly.

When you select a part of the object using Direct Selection Tool, its length is calculated and shown instantly. If you select other segment, its length is shown instantly.

Also, when you select several segments of different objects, the total length is measured and shown here.

### Area Measurement Tool

This tool measures the area of an object selected by Direct Selection Tool. When you select several objects, the total size of the areas is shown here.

These buttons are to set snap functions. By pressing each button, each snap function is turned on.

#### Snap to Grid:

Depending on the grid dimension sets, the right side length and breadth movements can be controlled.

#### Snap to Anchor Point:

It snaps at the anchor point, and the cursor changes to

#### Snap to Intersection:

It snaps at the point of intersection where the paths cross, the cursor changes to

#### Snap to Path:

It snaps the entire paths top and the cursor changes to

#### Snap to Center Point:

It snaps at the center point of object and the cursor changes to

#### Vertical /Horizontal Snap:

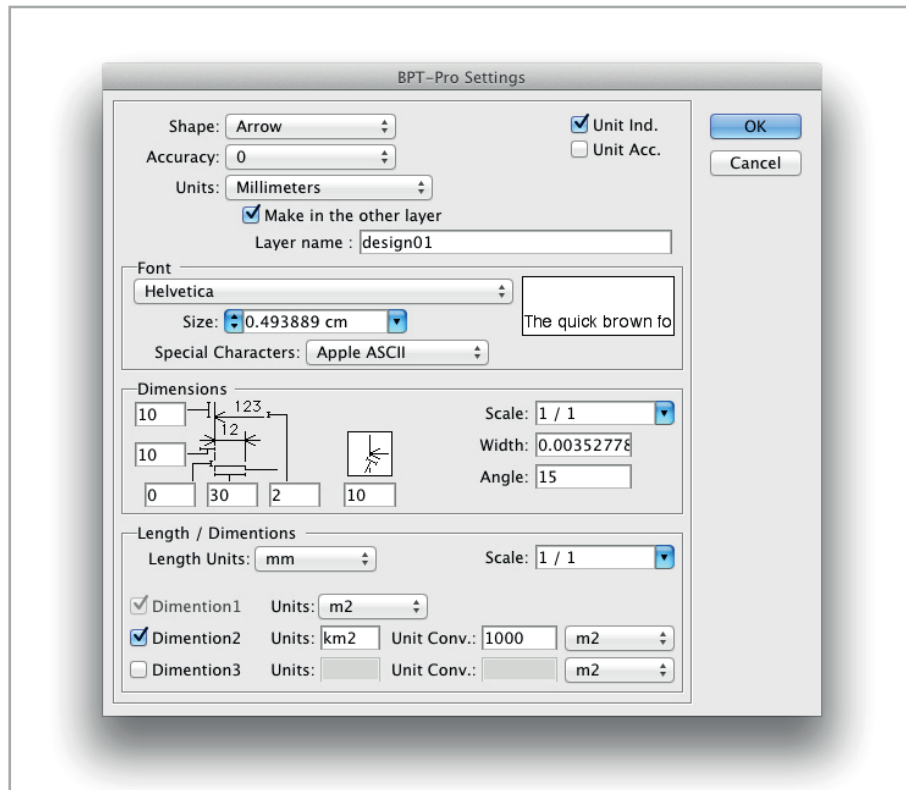
Based on the starting point of the path, during vertical axis movement, the cursor changes to and during horizontal axis movement, the cursor changes to

#### Grid Spacing:

Depending on the lower right sets dimension, the distance moved by dimension line tool is controlled.



## BPT Settings



**Shape:** This field is to set dimension lines for pointed end shapes. Rectangular, triangular, oblique and dot ends can be selected.

**Resolution:** The measurement resolution to the nearest decimal point can be selected.

**Unit:** Unit of measurement can be selected.

**Make in the other layer:** Makes dimension lines in the other layer that you named.

**Unit Ind.:** This field is checked or un-checked to indicate or hide the above selected units.

**Unit Acc.:** When resolution of 0.00 etc. is selected, this field is checked or un-checked to show or hide the measured value decimal points below 00 (example: less than 0.25mm, is set as 25.00mm / 25mm).

**Fonts:** The field is used for setting font type, size, and size unit from the pull down menu.

**Dimension Line Setting:** The field sets the dimension lines for detailed shapes. Design scales, dimension line width, dimension line pointed arrow ends angle, and other dimension line properties are decided in these fields.

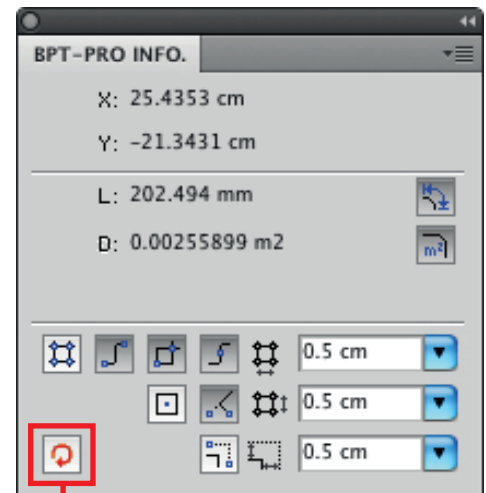
**Length / Dimensions:** Settings of the comments for length and dimension. By changing the ratio, various units are available.



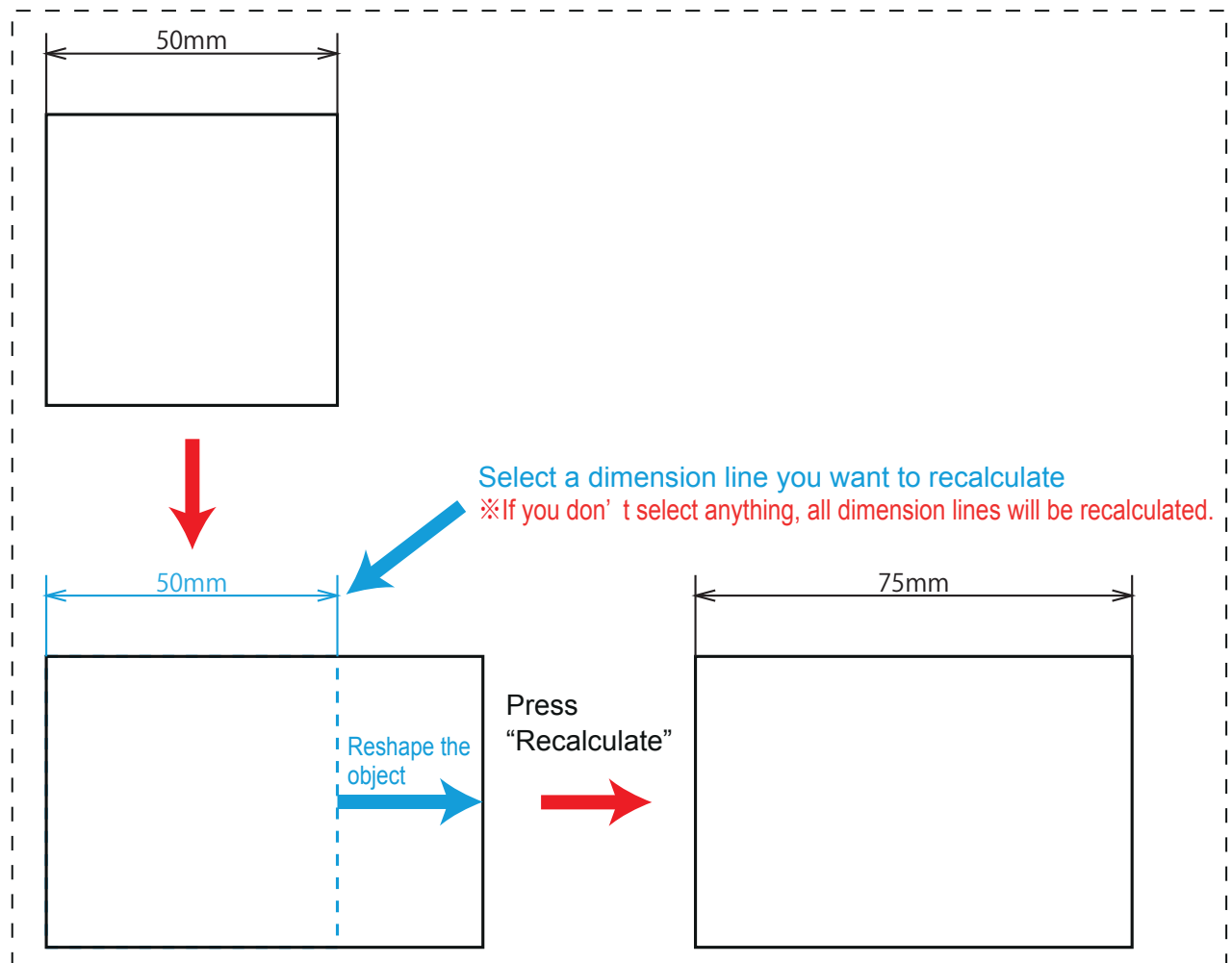
## Automatic re-calculation of dimension lines

When the object's shape is changed, its dimension lines can be automatically recalculated and the new dimension line is shown.

1. As indicated in the picture below, add a dimension line using Dimension Tool.
2. Reshape the object as you like.
3. Select a dimension line to be recalculated. (If there are several, select them all. **If you don't select anything, all dimension lines will be renewed.**)
4. Then press "Recalculate" button in the BPT information palette. When a dialog asks you if you really recalculate, press "OK". Then all selected dimension lines are renewed. (**If you don't select anything, all dimension lines will be renewed.**)



Recalculate Button







## Trouble Shooting

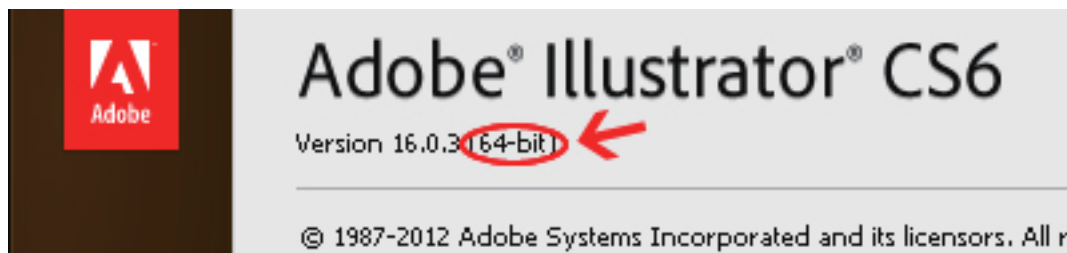
### ■ Fonts are garbled or not showing in English :

Install of the plugin is not completed properly. Please confirm that Illustrator is completely closed and try reinstall of the plugin. Also, please log in to your computer as the same user who installed the plugin.

### ■ Can't install to Windows:

There are three things you should confirm:

1. Make sure that the downloaded data is completely unzipped.
2. Confirm if your Illustrator (Not OS) is 32bit or 64bit version. You can see it on "About Illustrator" in "Illustrator(Mac)" or "Help(Win)" menu of Illustrator. Then install the right version of software. (e.g. If you install BPT-Pro to CC2017 64bit : Open "BPT-Pro AICC(x64)" in BPT-Pro's folder you downloaded and open Setup.exe.)



3. If "Program Compatibility Assistant" popped out, choose "This program installed correctly". We are sure that our data is safe and correct.

### ■ Can't install to Mac:

-Please confirm that plugin is installed to a right version of Illustrator.

-The install data could be old. Please download the latest data here:

<http://www.baby-universe.co.jp/en/support/download/>

### ■ ID(Activation key) doesn't work:

- Please copy&paste ID sent from Baby Universe by email. You shouldn't input it manually.

- Install of the plugin might not complete correctly. Please close Illustrator completely and try reinstall of the plugin.

**Visit our website for the latest support information:**

<http://www.baby-universe.co.jp/en/support/>

For further questions pelase email us at [info\\_eng@baby-universe.co.jp](mailto:info_eng@baby-universe.co.jp)



**Purchase BPT-Pro4 at our online store:**

[https://www.baby-universe.co.jp/shopping\\_eng/index.jsp?dir=%2F1%2F.25](https://www.baby-universe.co.jp/shopping_eng/index.jsp?dir=%2F1%2F.25)

**BABY UNIVERSE Inc.**

FAX: +81 466 55 3001

Email: [info\\_eng@baby-universe.co.jp](mailto:info_eng@baby-universe.co.jp)