



Pre requisite for TeamWork Oracle Installation

dbMaestro TeamWork Server

1. .NET 3 Framework must be installed. It can be downloaded from:
www.microsoft.com/downloads/details.aspx?familyid=10cc340b-f857-4a14-83f5-25634c3bf043
2. The version of Oracle client (ODAC) must be 10.2.0.2.21+. It can be downloaded from:
<http://www.oracle.com/technology/software/tech/windows/odpnet/utilsoft.html>
3. Oracle Database 10g Client Release 2 (10.2.0.1.0) including SQL Plus. It can be downloaded from:
<http://www.oracle.com/technology/software/products/database/oracle10g/htdocs/10201winsoft.html>

dbMaestro TeamWork Database

1. dbMaestro TeamWork repository installation requires Oracle Database 10g release 2.
2. The managed database schemas must reside on Oracle Database 10g release 2.
3. The database installation user must have a "Create database schema" privilege on the database.

dbMaestro TeamWork Client

1. .NET 3 Framework must be installed. It can be downloaded from:
www.microsoft.com/downloads/details.aspx?familyid=10cc340b-f857-4a14-83f5-25634c3bf043
2. The version of Oracle client (ODAC) must be 10.2.0.2.21+. It can be downloaded from:
<http://www.oracle.com/technology/software/tech/windows/odpnet/utilsoft.html>



Installation instructions – quick guide

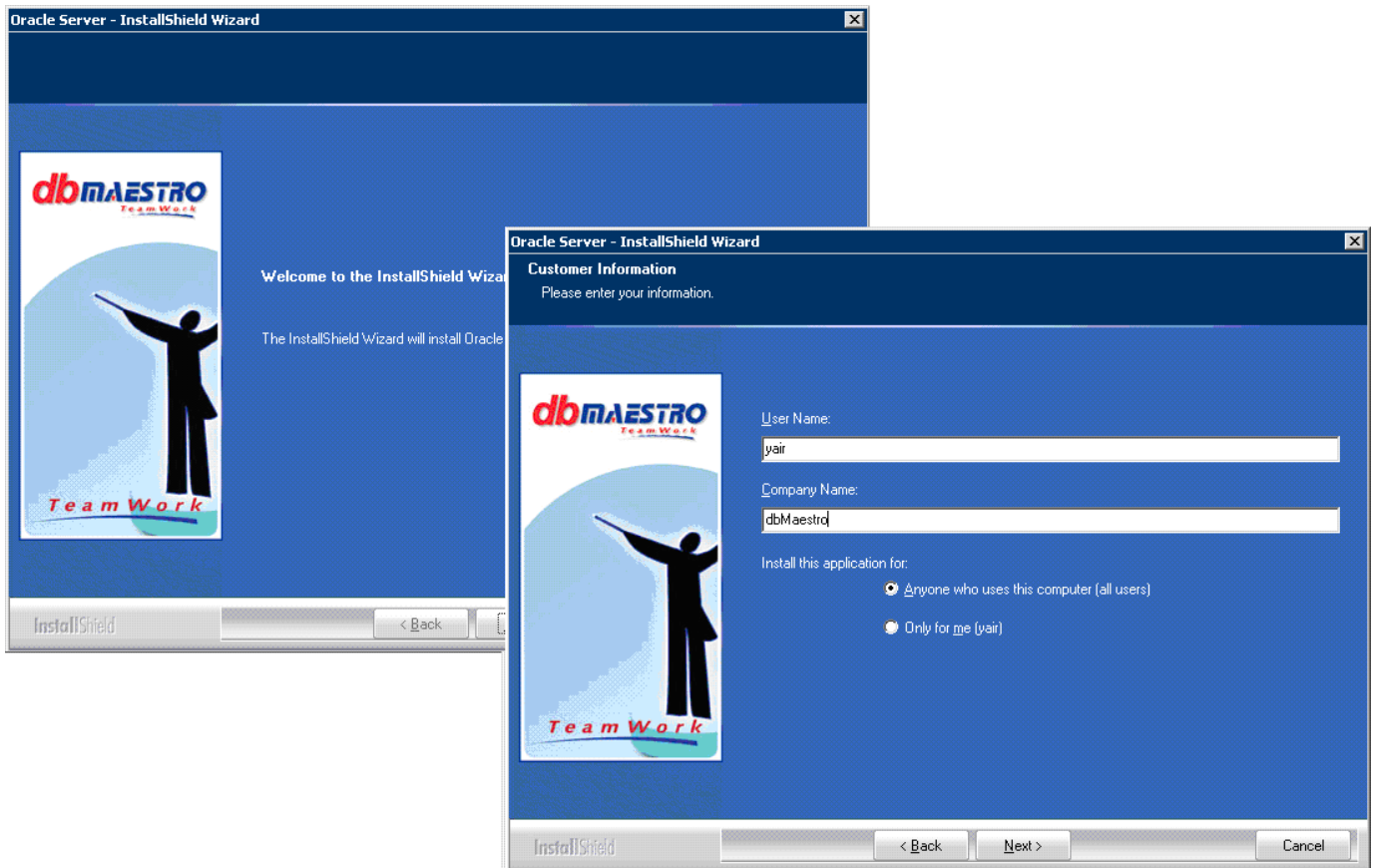
- Install dbMaestro TeamWork server components:
 1. Choose complete installation to install both the dbMaestro TeamWork server and the database or custom to install one of the TeamWork server components.
 2. Select the dbMaestro server installation path.
 3. Select the oracle instance you wish to install the dbMaestro database on. – The database can reside on a different server with different Operating System (MS Windows / Unix based OS)
 4. Specify the dbMaestro TeamWork Window Services account information.
- Install dbMaestro TeamWork client components:
 1. Install dbMaestro TeamWork administration studio.
 2. Launch the dbMaestro TeamWork Studio: Start | Program Files | dbMaestro TeamWork | dbMaestro TeamWork Studio

dbMaestro TeamWork step by step installation guide

This document will guide you step by step, how to install dbMaestro TeamWork product.

Server Installation

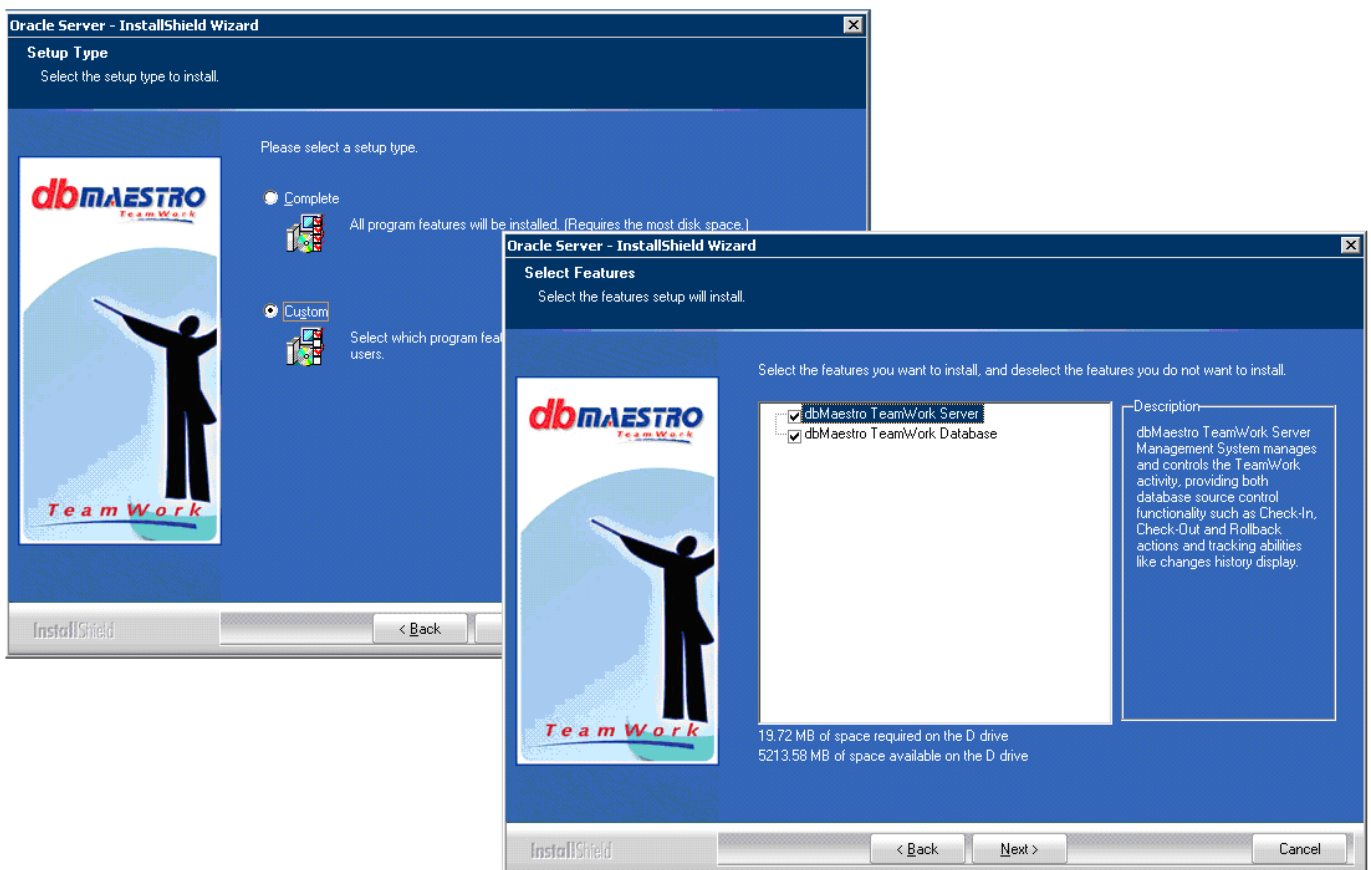
- The welcome window starts the dbMaestro TeamWork server applications installation wizard.



- The License Agreement window requires the user to check the license acceptance option in order to continue with the TeamWork server installation. The next window – Setup Type selection, enables the user to select whether a complete dbMaestro TeamWork server setup will be launched or partial selected server components will be installed.

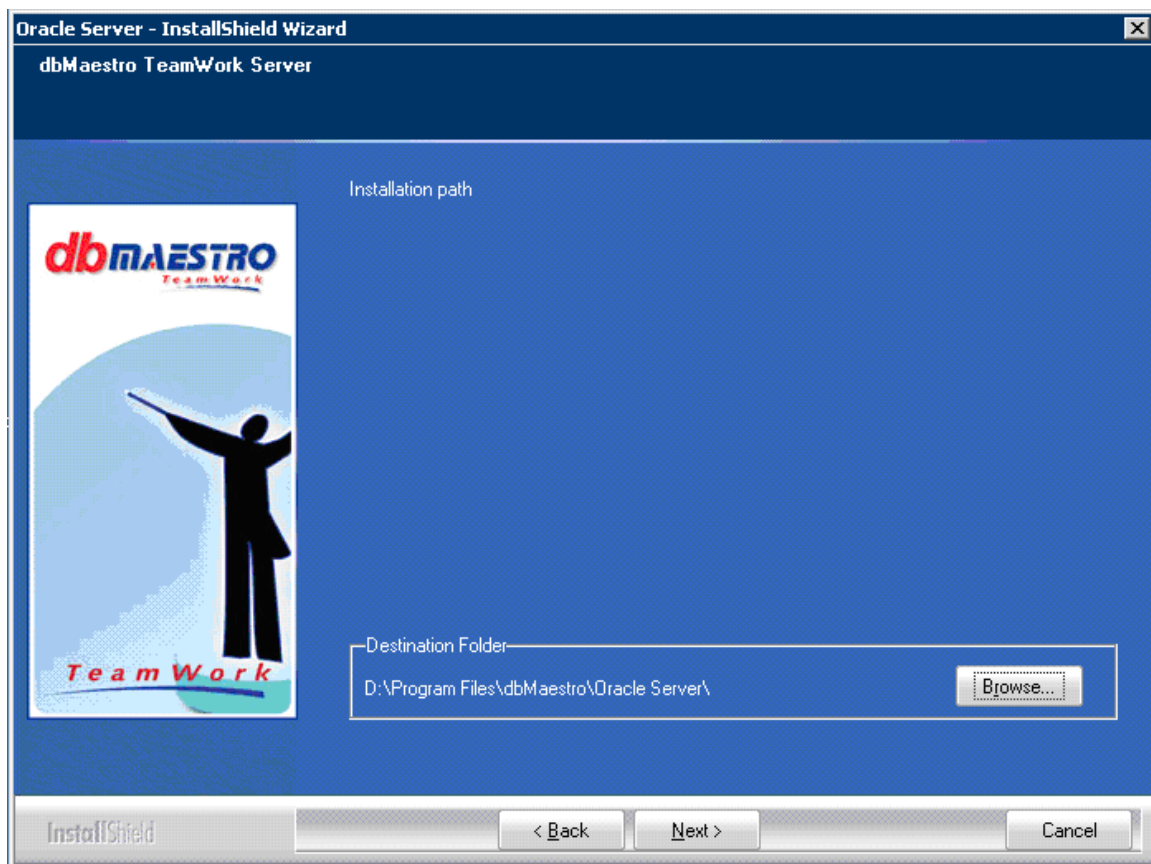
Choosing the Complete option will install both the dbMaestro TeamWork window services and the TeamWork repository. Choosing the Custom installation option will enable you to select the TeamWork services and TeamWork repository from a list of server components to install.

The Server Components selection window lists the dbMaestro TeamWork Server and the dbMaestro TeamWork database repository. Checking the dbMaestro TeamWork server option will install 3 window services on the installed machine. Checking the dbMaestro TeamWork Database will install 2 database schemas of the dbMaestro repository on the specified oracle server.



- The next window – dbMaestro TeamWork Server, is getting displayed when the dbMaestro TeamWork Server option - at the server components selection window, is checked. The dbMaestro TeamWork Server window requires the user to enter the folder in which the TeamWork window services will be installed.

In order to change the destination folder click on the Browse button and change the TeamWork services installation folder.



- The dbMaestro TeamWork Repository window is getting displayed when the dbMaestro TeamWork Database option - at the server components selection window, is checked. The dbMaestro TeamWork Repository window requires the user to enter the Oracle database host name, port, service name or SID and authentication type. If the Oracle authentication type has been selected, the user is required to enter oracle username and password.

Using these authentication settings, the setup will create two oracle database schemas on the specified remote oracle database. The specified user must have permissions to add /modify new database schemas on the specified remote oracle database. In order to enable the Next button on the setup navigation bar and continue the dbMaestro TeamWork setup, you need to test your database settings first.

Click on the Test button to test the TeamWork connection to the remote oracle database. A message will be displayed next to the Test button indicating whether a successful connection to the database has been established or not. In case the dbMaestro failed to establish a successful database connection, please change the oracle database connection settings and try again.

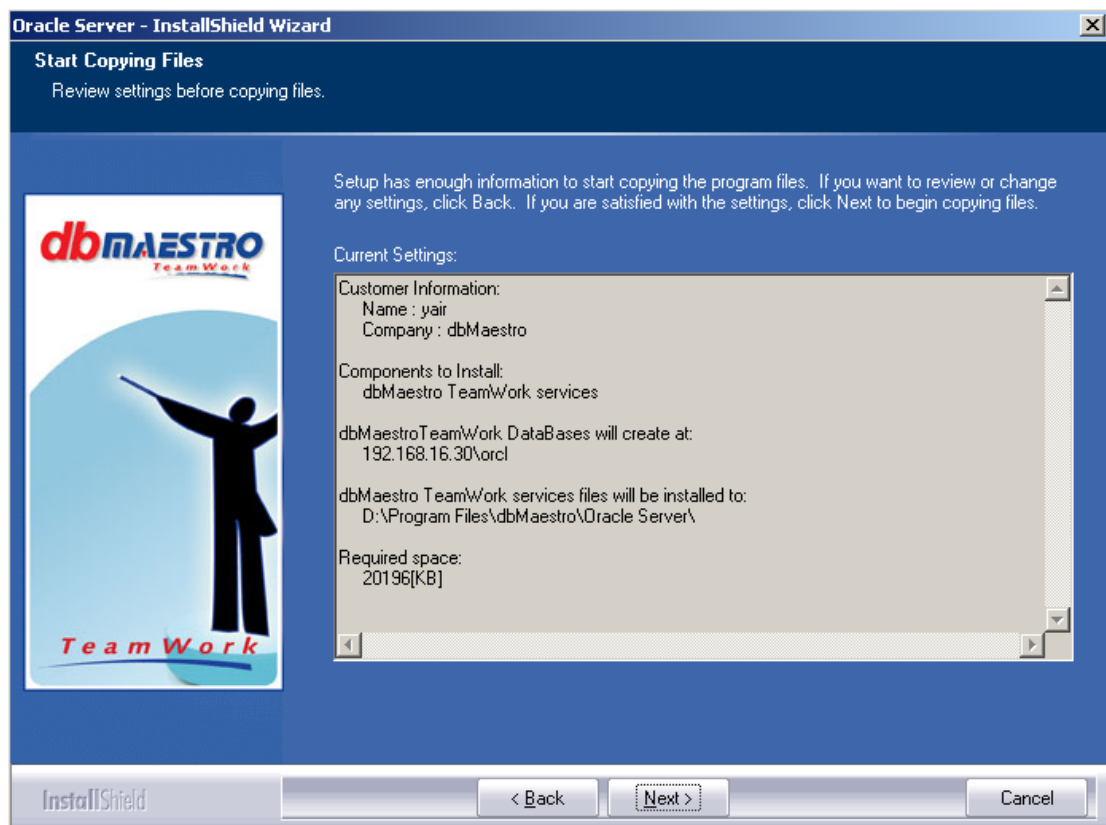
Oracle Server - InstallShield Wizard
dbMaestro TeamWork Repository

Select DataBase Connection
Oracle

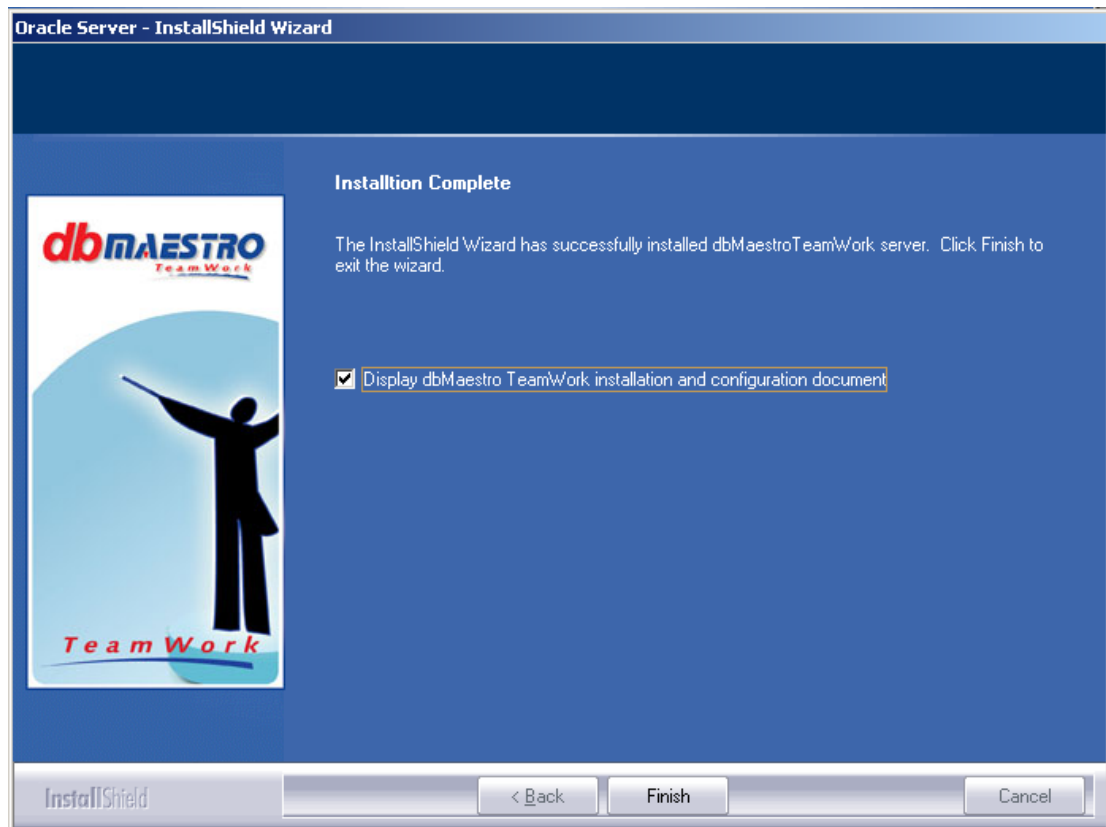
Host Name: 192.168.16.30
Port: 1521
Service Name:
SID: orcl
Oracle
NT
Username: system
Password:
Success Test

InstallShield < Back Next > Cancel

- The next window – installation settings review displays a summary report of all Server setup settings selected. The report includes the customer information, the selected server components to be installed, the destination folder in which they will be installed and the destination oracle database for the dbMaestro TeamWork repository.

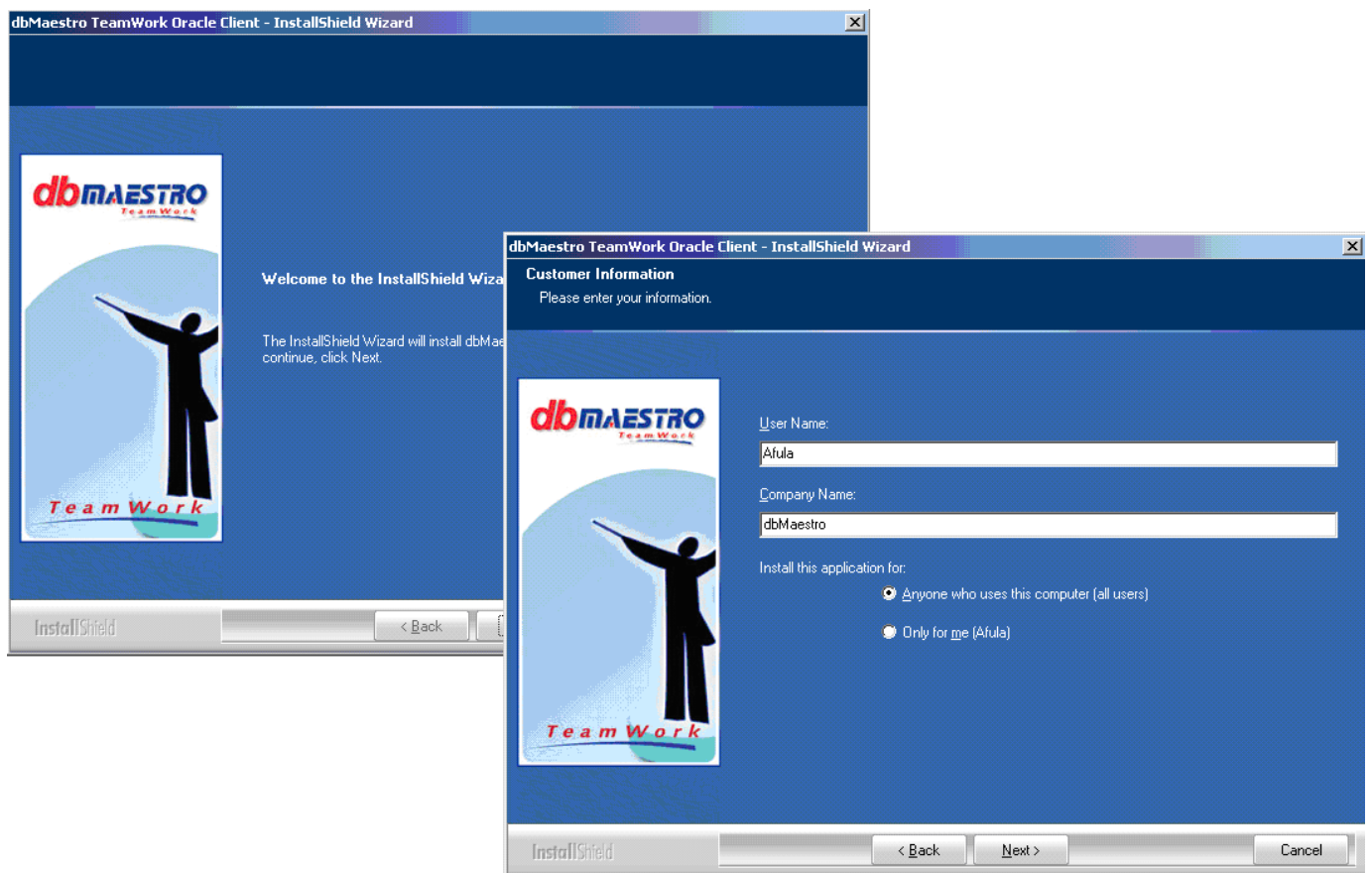


- The last window completes the TeamWork Server installation wizard. dbMaestro TeamWork window services will be launched right after the server components installation.



Client Installation

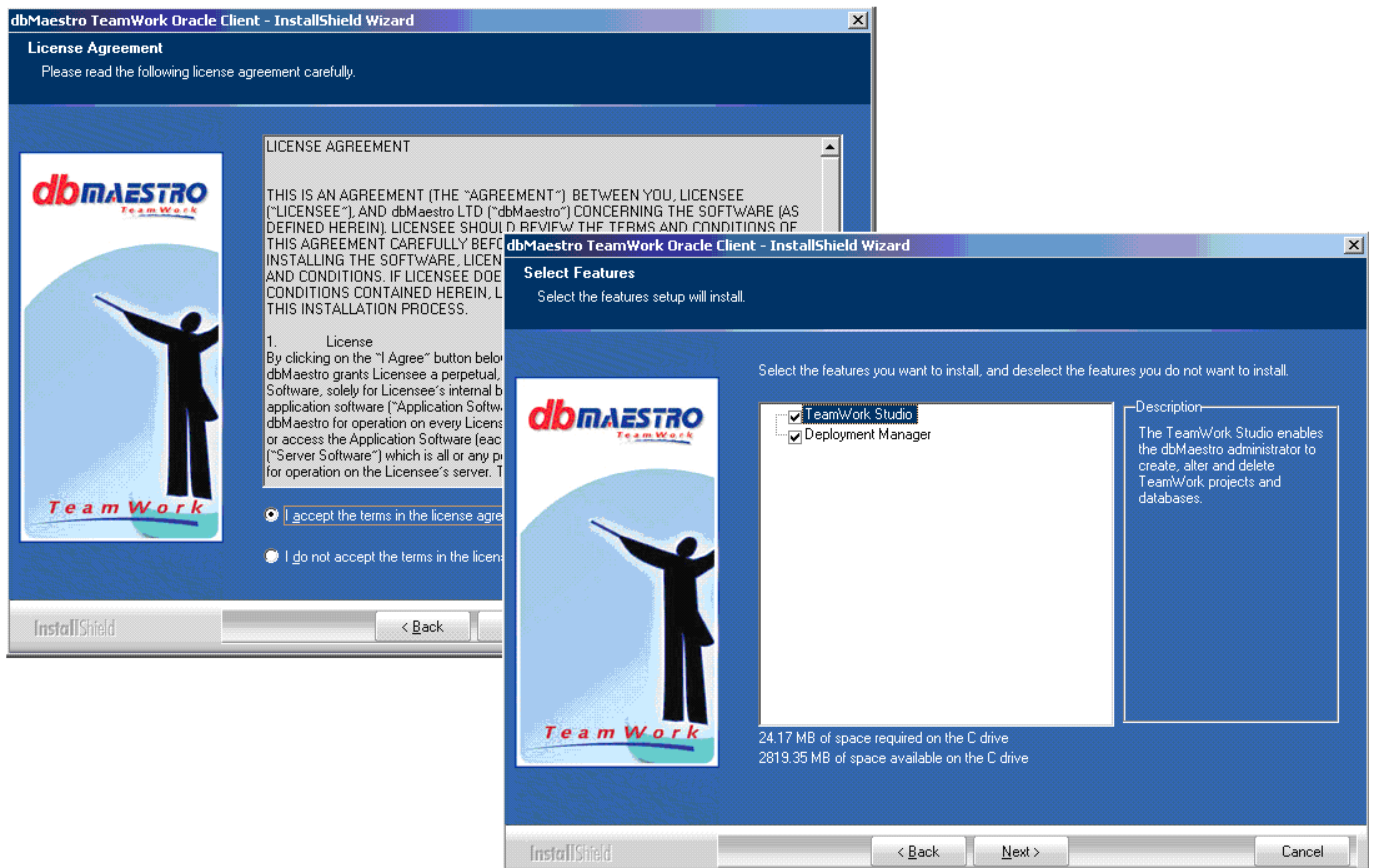
- The welcome window starts the dbMaestro TeamWork client applications installation wizard. The next window – Customer Information, requires the User Name and Company of the user who uses the client application.



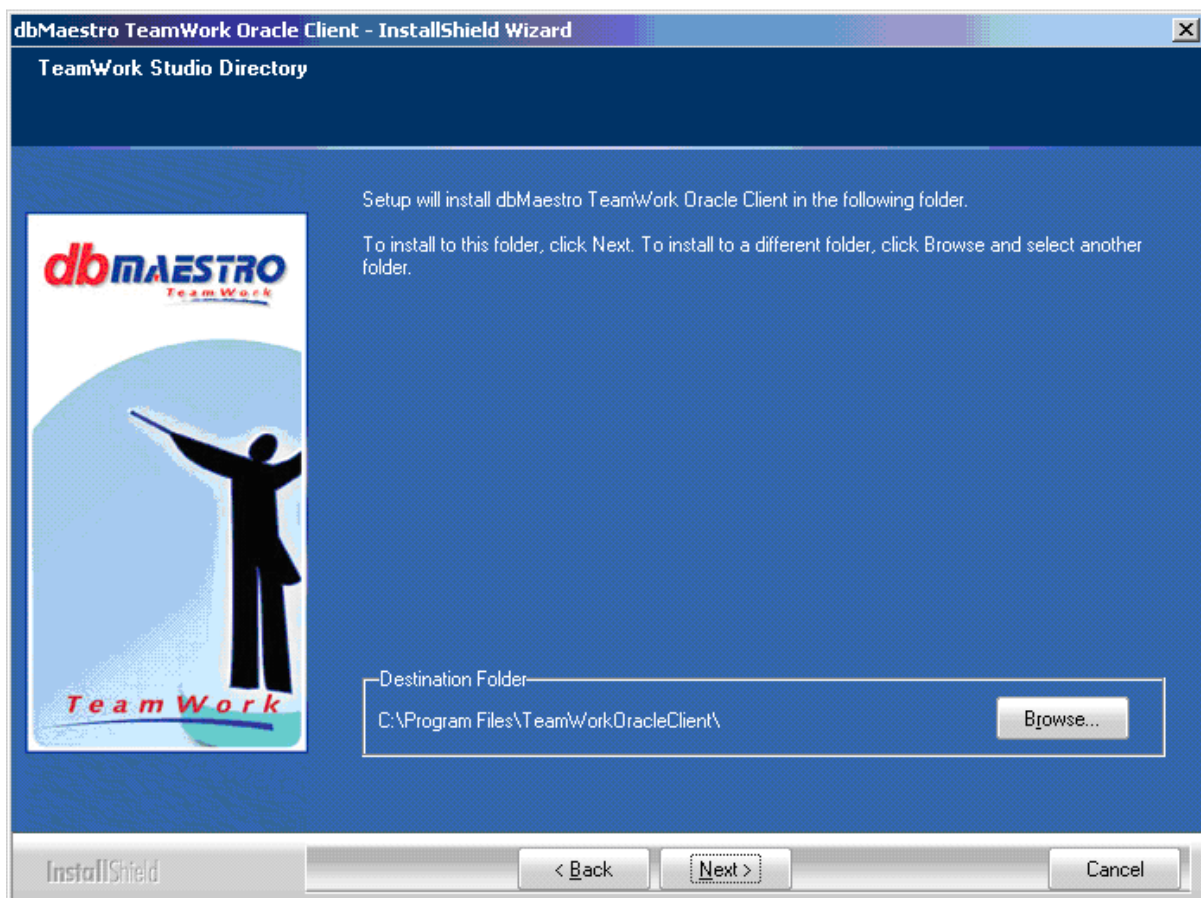
- The License Agreement window requires the user to check the license acceptance option in order to continue with the TeamWork client installation. The next window – Application feature selection, enables the user to select which dbMaestro TeamWork client application will be installed.

Checking the TeamWork Studio option will install the dbMaestro administration tool called dbMaestro TeamWork Studio. Using dbMaestro TeamWork Studio the user is able to execute administration tasks such as system configuration and projects management. This option is mainly used by database administrators.

Checking the Deployment Manager option will install the dbMaestro TeamWork Deployment Manager tool. Using dbMaestro TeamWork Deployment Manager the user is able to generate and run successful deployment plans. This option is mainly used by database administrators.

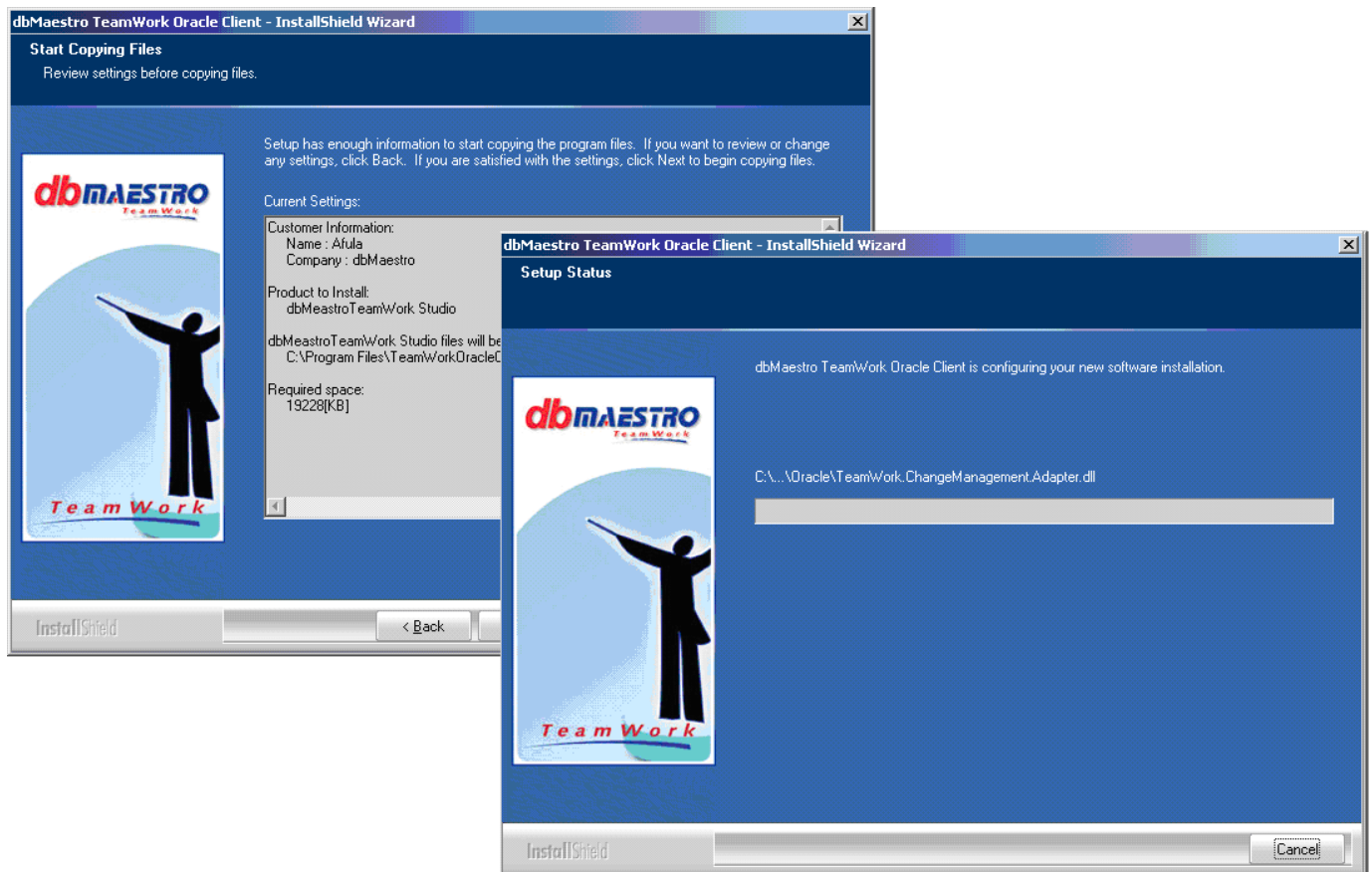


- The TeamWork Studio Directory window requires the user to enter the folder in which the TeamWork client application will be installed. In order to change the destination folder click on the Browse button and change the application installation folder.

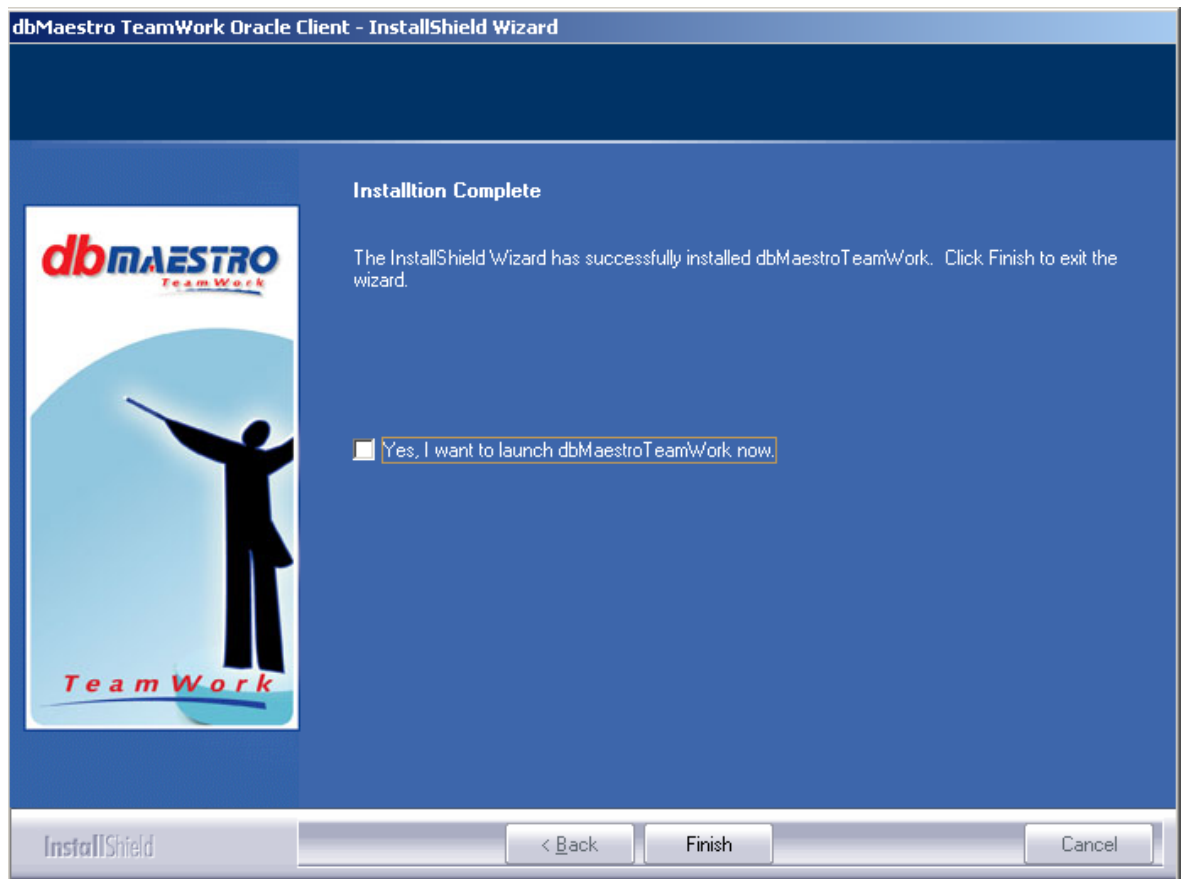


- The Installation Settings Review window displays a summary report of all client setup settings selection. The report includes the customer information, the selected client applications to be installed and the destination folder in which they will be installed.

The next window – Setup status, displays the setup status while copying and registering the different application components on the user's workstation.



- The last window completes the dbMaestro TeamWork Client installation wizard. Check the launch dbMaestro TeamWork now option in order to start the dbMaestro TeamWork right after the installation.





dbMaestro TeamWork Configuration

Post installation Configuration instructions

- In order to provide dbMaestro TeamWork the ability to control databases accessibility, the TeamWork studio pops up a window the first time the dbMaestro TeamWork studio is getting activated. In this window, The user needs to specify the dbMaestro TeamWork administrator. The dbMaestro TeamWork administrator can grant "project privileges" to dbMaestro users. Thus, enabling them to manipulate TeamWork projects and control their hierarchy.

A dbMaestro TeamWork project administrator handles the following administrative tasks:

1. Creation of TeamWork projects hierarchy on the TeamWork administration studio.
 2. Databases Add and Removal from the TeamWork change management system.
 3. Database change management Suspension and resume actions.
 4. Check-Out data action enabling on selected database tables.
 5. Generation of Reports on monitored databases.
- The dbMaestro TeamWork system enables your domain users to perform change management actions such as: Check In, Check Out, View History, rollback and comparison of both data and schema. While a database object is checked in, changes cannot be applied to it and the object cannot be altered. In order to change the database object, the database user needs to acquire an exclusive locking on the database object by checking out the database object.

For more information about dbMaestro TeamWork, please view the dbMaestro user's guide:

- **Chapter 3 - quick tour of the user interface**
- **Chapter 4 – setting up dbMaestro TeamWork**