

Version 1.1

... Thank You ...

Thank you for installing iNever Forget v1.1 onto your computer. This program is available for purchase from our website: <http://www.simplysaidsw.com/store>. If you have any comments, suggestions or complaints about this product please visit our site: <http://www.simplysaidsw.com/support>. This document contains all the information you need to use this software effectively. We hope that iNever Forget makes your life a whole lot easier.

... Table of Contents ...

1. Overview of Features
2. How to use iNever Forget
3. Purchasing iNever Forget
4. User Agreement

... 1. Overview of Features ...

- Safely store your passwords for applications, websites, email, and more.
- Password protected for your safety. No one but you can access or change your passwords
- Automates the login process on websites, applications, email and more. You never have to type them in again. Logging in is as simple as a click of a button
- Your password file is encrypted so only you can access it via your password. If your password file is stolen, you can be at ease that malicious hackers will not see your information.
- Allows you to enter passwords for websites, gui applications, command line applications
- Application locks while you are away. If you walk away from your computer with iNever Forget up it will automatically lock allow your information to be safe from prying eyes.
- Fully customizable to fit your needs.

... 2. How to use iNever Forget ...

Step 1: Create your login



The 'Create Login' dialog box has a title bar with standard Mac OS window controls. The main text reads: 'Well there is only one password you will have to remember. For security reasons you will have to remember this password to protect your settings.' Below this, there are two text input fields. The first is labeled 'Password:' and the second is labeled 'Password Verify:'. At the bottom, there are two buttons: 'Quit' on the left and 'Set' on the right.

1. Enter your desired password to be used with iNever Forget in the first box then reenter the same password in the second box to verify you have spelled your password correctly.
2. Press the “set” button

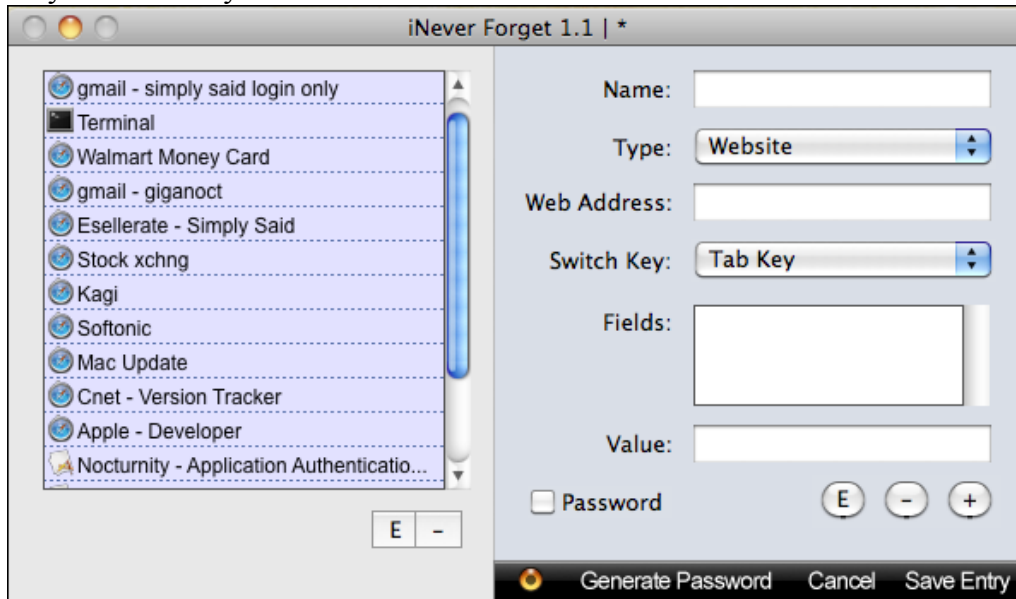
Step 2: Login



The 'Login' dialog box has a title bar with standard Mac OS window controls. The main text reads: 'Well there is only one password you will have to remember. For security reasons you will have to remember this password to protect your settings.' Below this, there is a single text input field labeled 'Password:'. At the bottom, there are two buttons: 'Quit' on the left and 'Login' on the right.

1. Enter the Password you have chosen and then press “Login”

Step 3: Create your first entry into the database



1. Type the name of site/application or login you wish to use in the “Name:” Field.
2. On websites you need to make sure that the switch key is “Tab Key”. If it is not set to the “Tab Key” the program will not function correctly.
3. Enter your first field. On the gmail website there is a username field and a password field.



So your first field would be your username. Ours for this example is 'simplysaidsw'. To add this field click the “+” button. The second field we need to enter is our password.

Make sure when typing in passwords you click the “Is Password” check box. If you do not it will show up as plain text, which will allow other users to see your password. Once you have entered your password, click the “+” button to add it.

4. Click the “Save Entry” button to save your information.

Step 4: Using the floating window to login to your email.

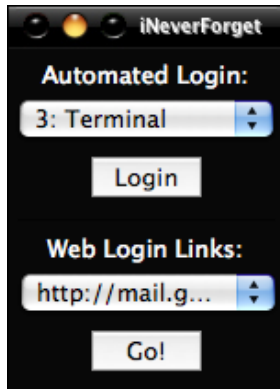


Figure: 1

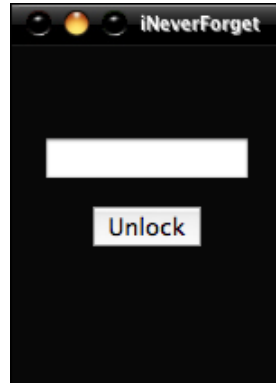
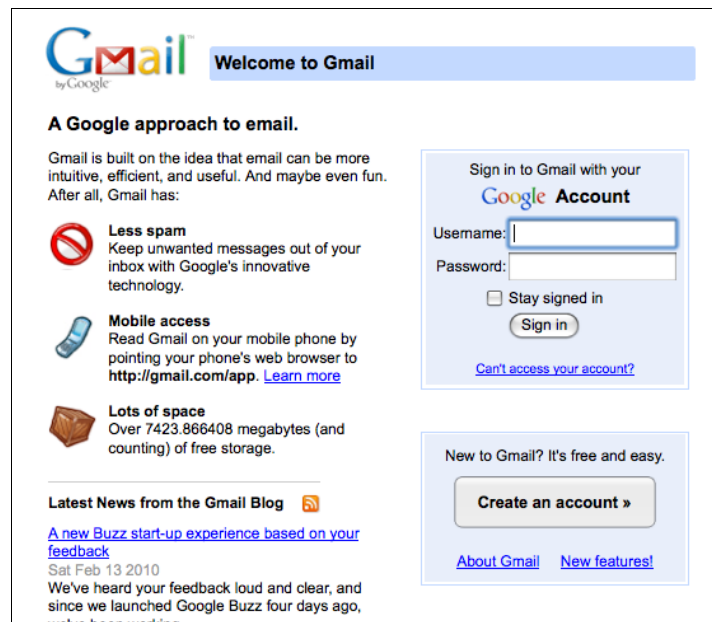


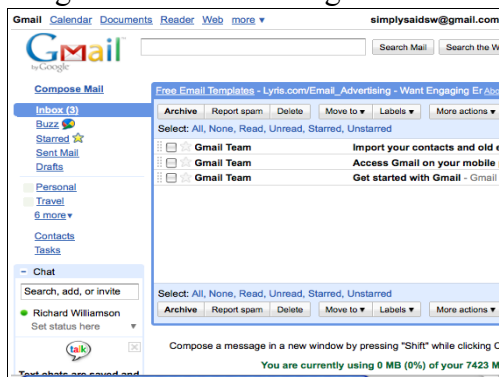
Figure: 2

If your floating window looks like figure 2, enter your password and click unlock and it should look like figure 1.

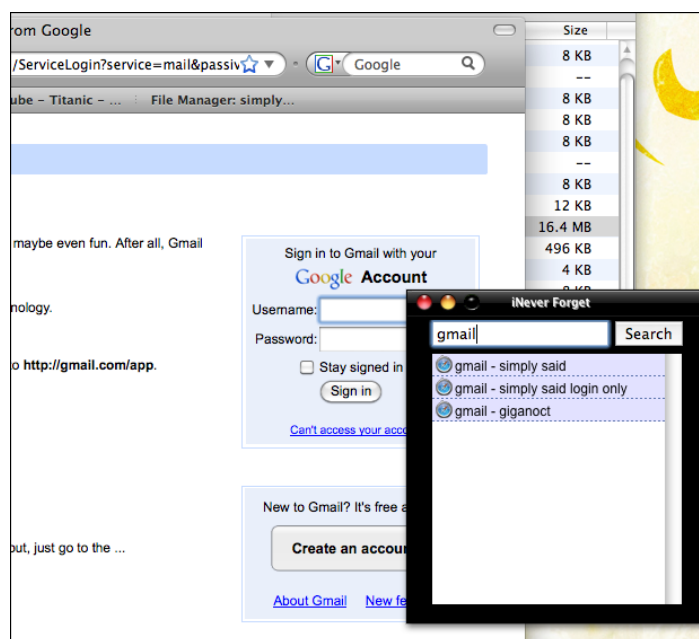
1. Open your web browser to the gmail page. Verify you have the username box selected if you do not have it selected click in the box. If you don't do this iNever Forget will not be able to correctly log in to gmail. Your web browser must be the front most applications if it is not bring the browser window to the forefront.



2. Click the “Login” button seen in figure 2.



An alternate method of logging is via keyboard/mouse binding. The default is the option key+ left click



You can either scroll the the list or search for the login you wish to use. Simply option+click the Username box and click on the login you want to use and you are there.

... 3. Purchasing iNever Forget ...

To purchase a license for this application please visit our website at <http://simplysaidsw.com/store>. The current cost for the application may change, but at the release of this text it is currently only \$15 USD. Any bug fixes will be free for updating.

... 4. User Agreement ...

BY USING THIS APPLICATION YOU AGREE THAT YOU USE IT AT YOUR OWN RISK, ANY PROBLEMS IT MAY CAUSE WITH YOUR COMPUTER OR YOUR DATA IS YOUR RESPONSIBILITY. THE SOFTWARE COMES AS IS, THERE IS NO GUARENTEE TO THE USER THAT IF THERE IS A PROBLEM THE DEVELOPER HAS TO FIX IT UNLESS A LISENCE IS PURCHASED.