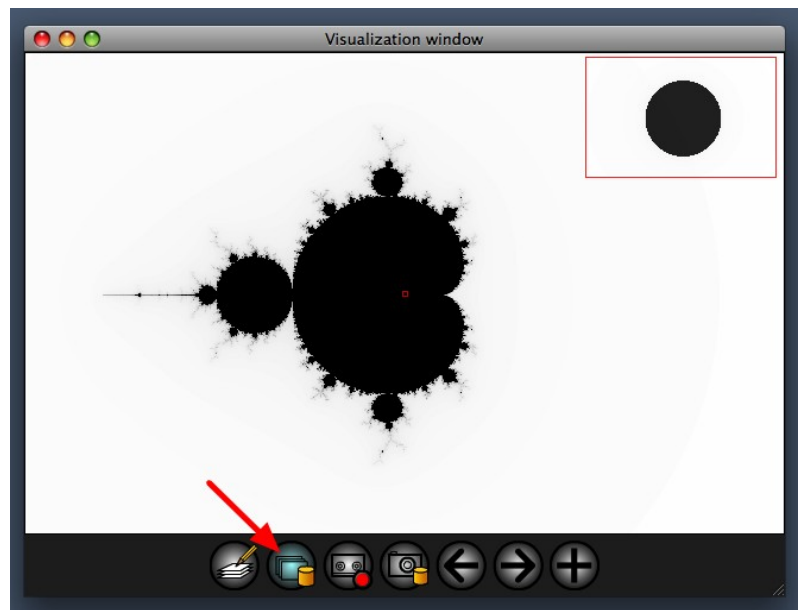


Working with the clips library and other services

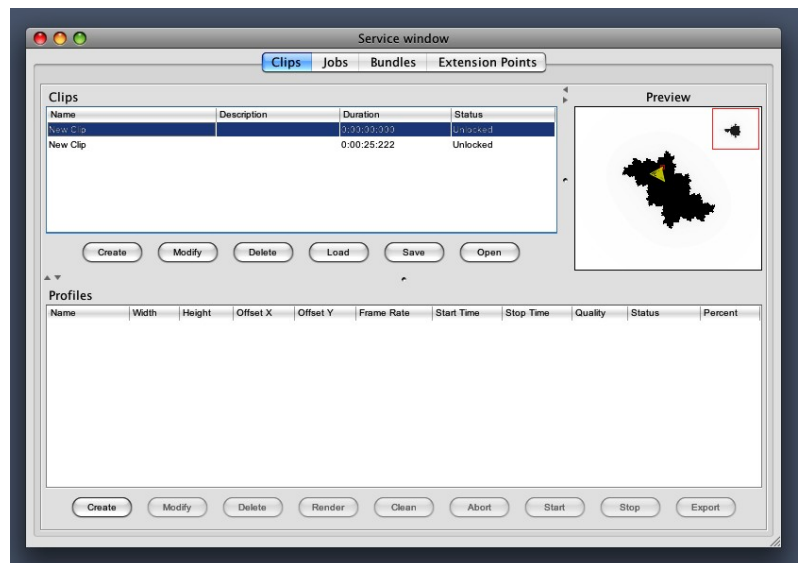
The service window

Open the service window.



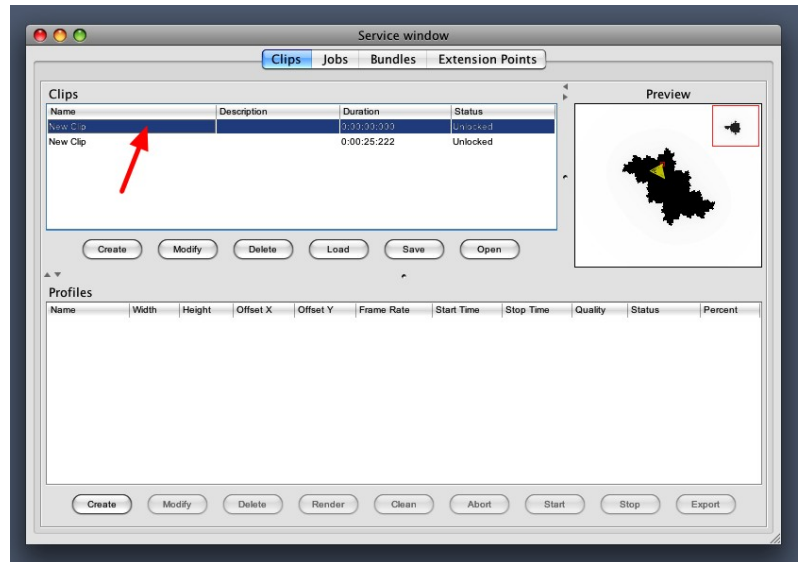
The service window

The service window contains the clips library, the jobs spool, the bundles tree and the extension points tree. The most important feature is the clips library, where you can manage your photos and movies. In this example, there are one photo and one movie in the library.



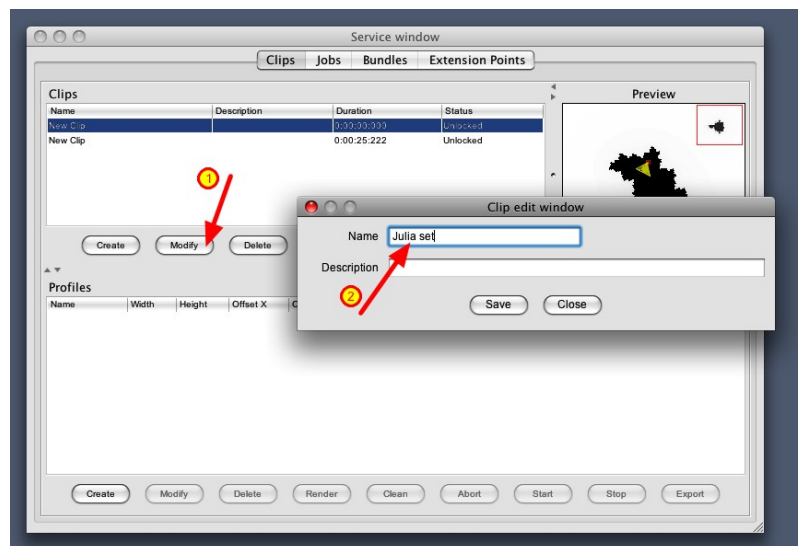
Clips table

Select the first row to load the photo in the preview.



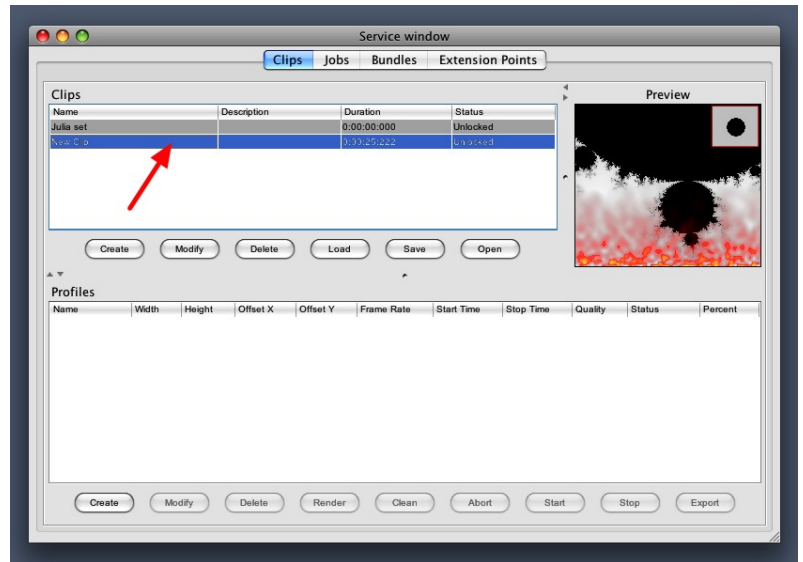
Clips table

Click on modify button to change the name of the photo.



Clips table

Select the second row to load the movie in the preview.



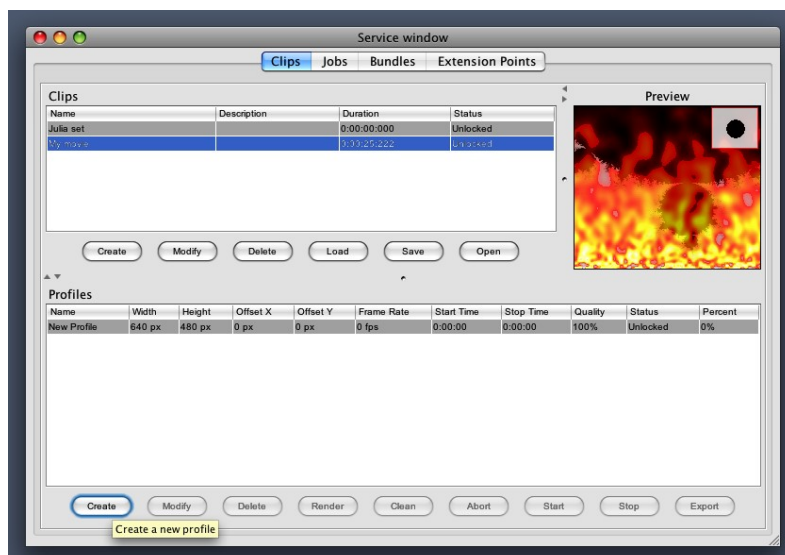
Clips table

Click on modify button to change the name of the movie.



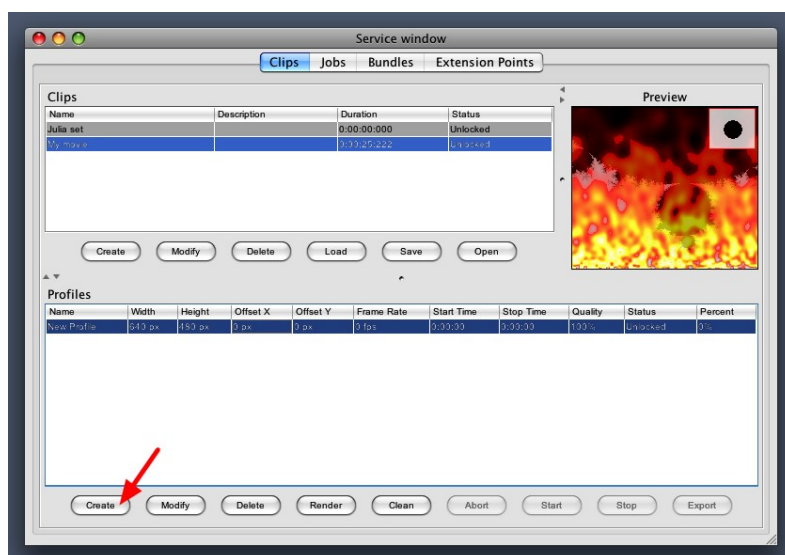
Profile table

Every clip can have one or more profiles. A profile defines how to render the photo or the movie, the size, the frame rate and the duration.



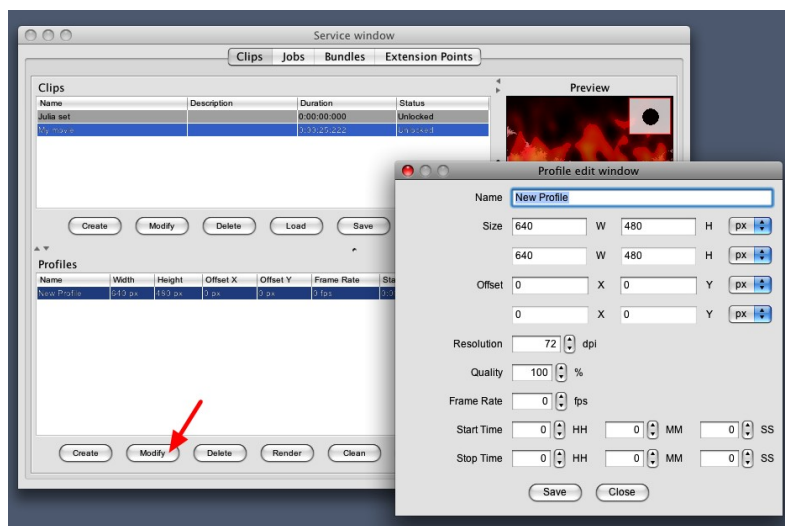
Profile table

Press create button to create a new profile.



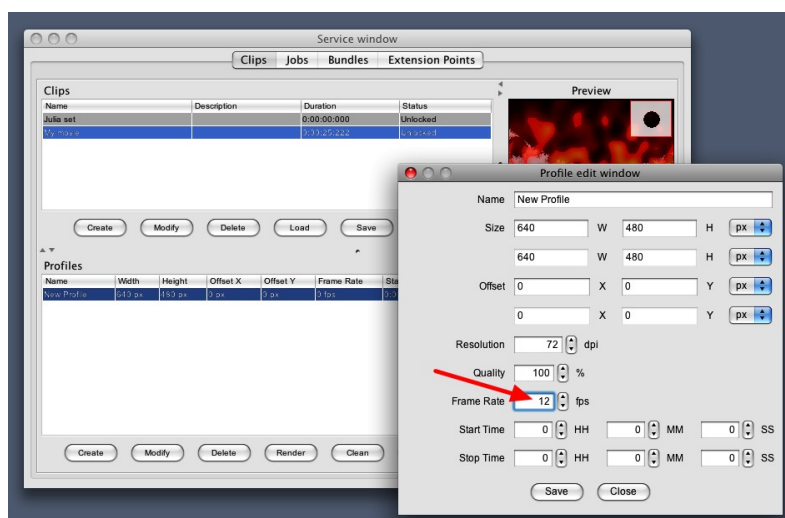
Profile table

Select the profile and press modify to change it.



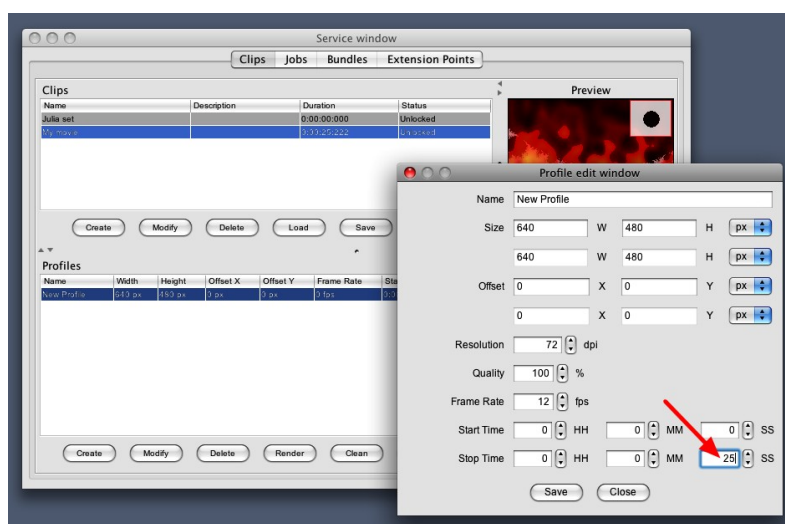
Profile table

Set the frame rate. The frame rate defines the number of frames in a second.



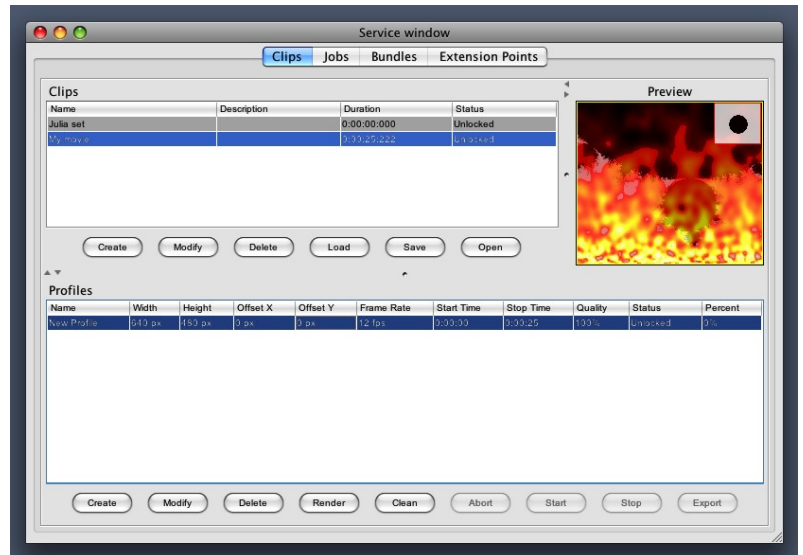
Profile table

Set the duration. The duration is the difference between the end time and the start time.



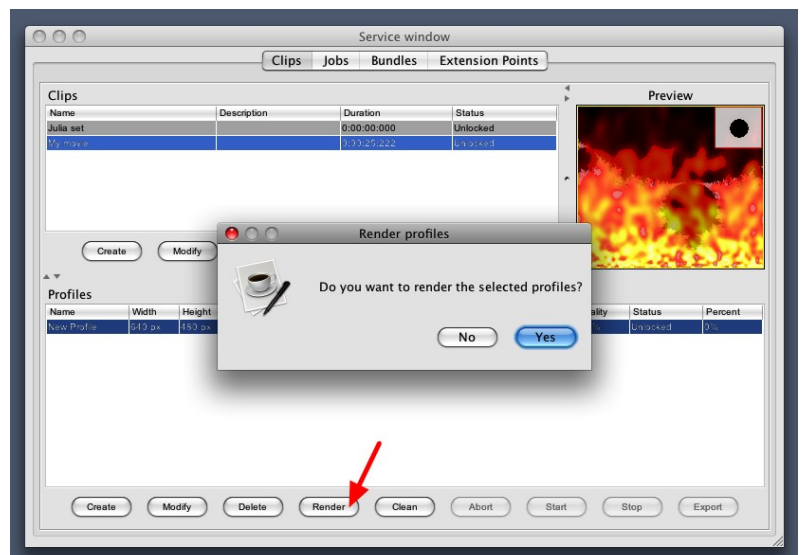
Profile table

The total number of frames depends on the duration and the frame rate.



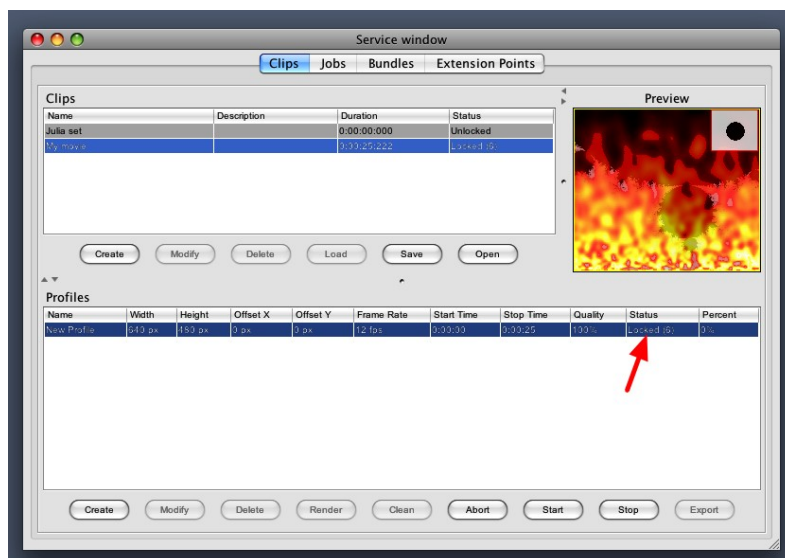
Profile table

Press render button to render the profile.



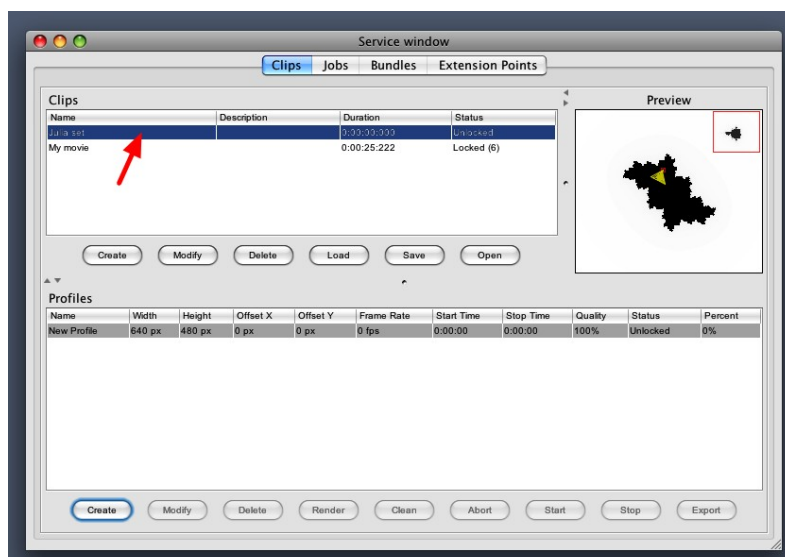
Profile table

While rendering the profile is locked.



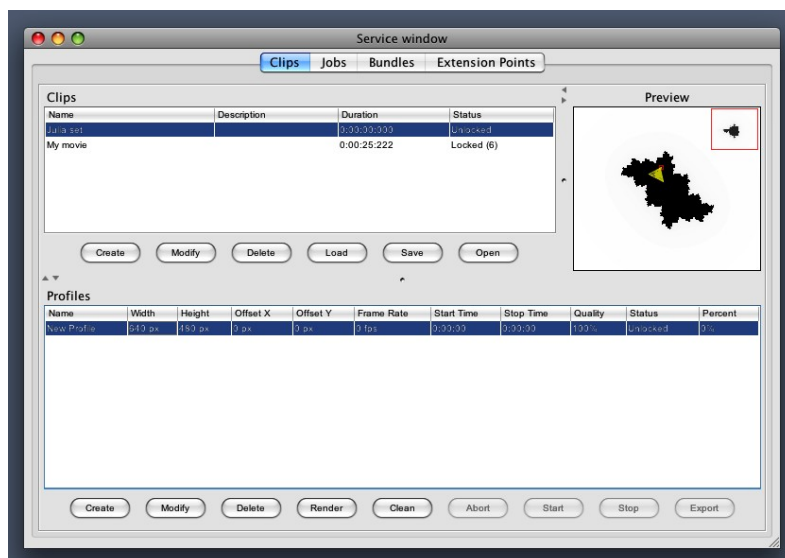
Profile table

Select the first clip and create a new profile.



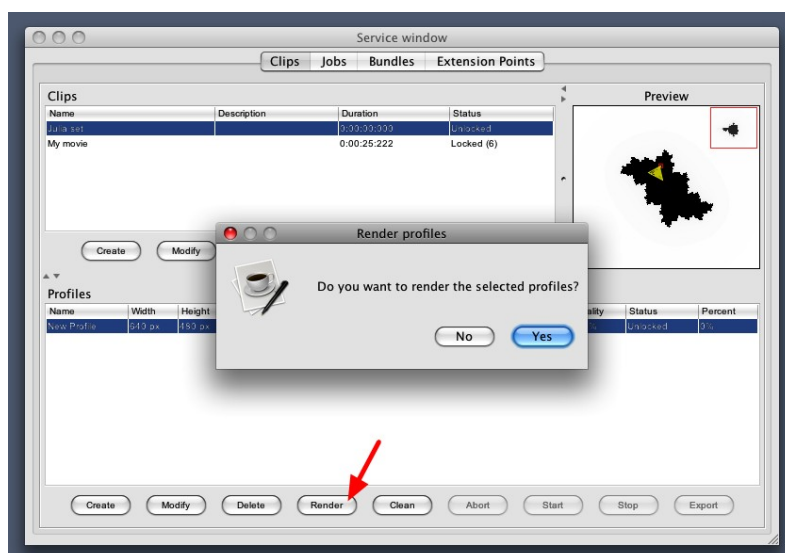
Profile table

Set the profile parameters.



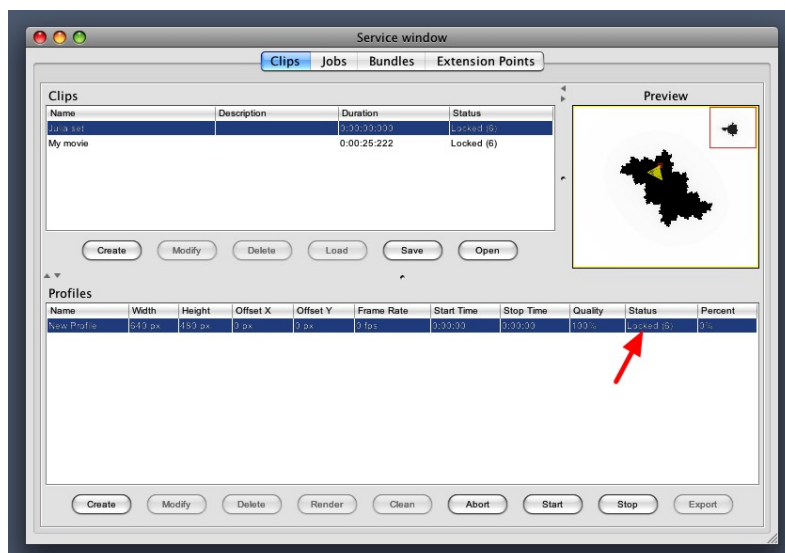
Profile table

Press the render button to render the profile.



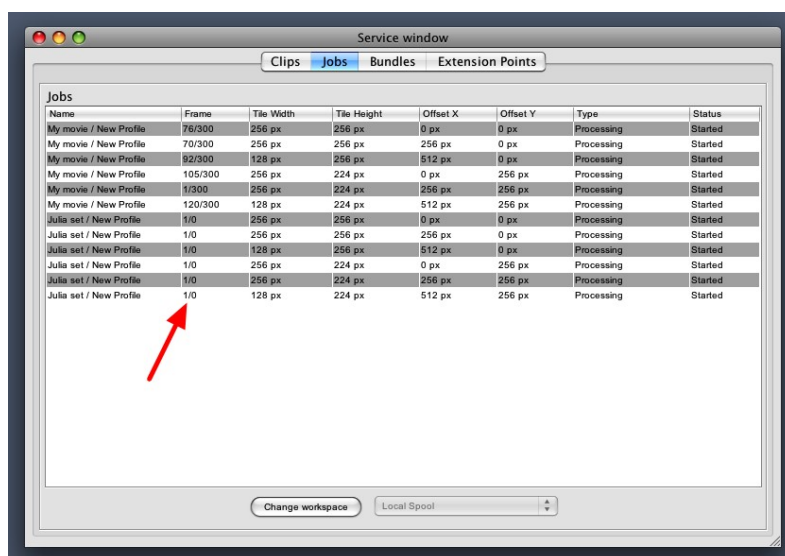
Profile table

While rendering the profile is locked.



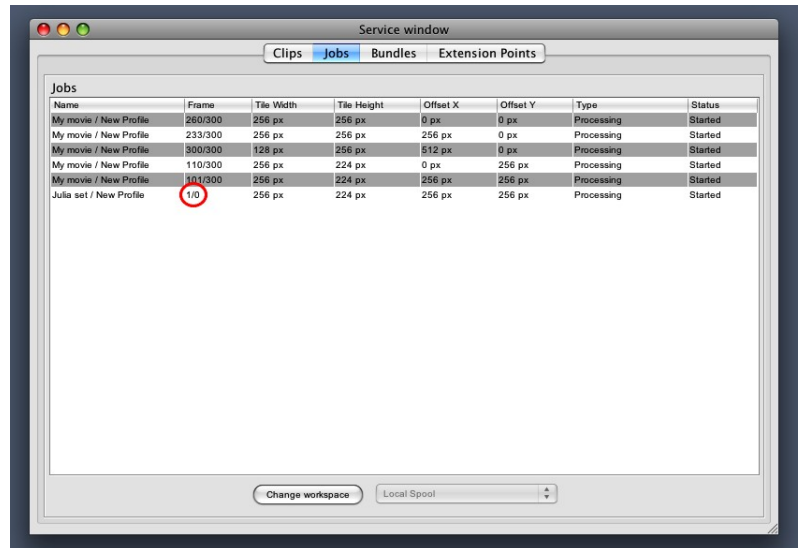
Job table

Click on jobs tab to see the job table. In the column frame number you can see the total number of frames rendered.



Job table

Photos have always zero frames.



Service window

Clips Jobs Bundles Extension Points

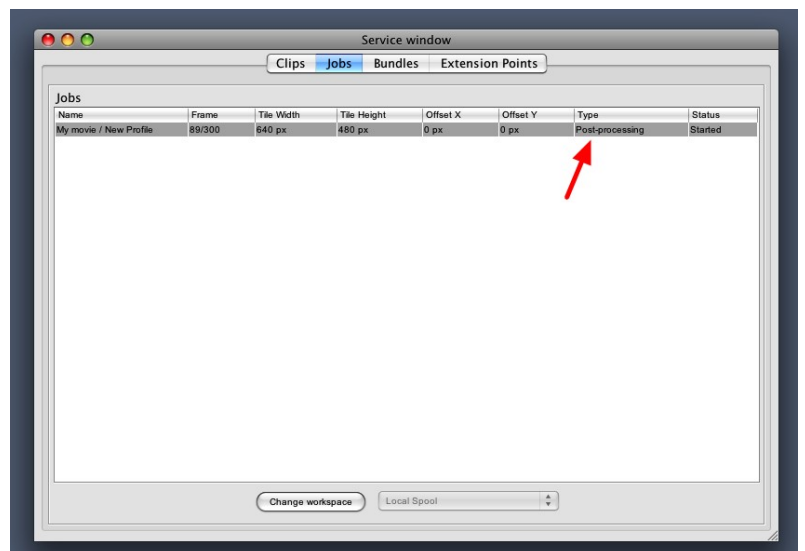
Jobs

Name	Frame	Tile Width	Tile Height	Offset X	Offset Y	Type	Status
My movie / New Profile	260/300	256 px	256 px	0 px	0 px	Processing	Started
My movie / New Profile	233/300	256 px	256 px	256 px	0 px	Processing	Started
My movie / New Profile	300/300	128 px	256 px	512 px	0 px	Processing	Started
My movie / New Profile	110/300	256 px	224 px	0 px	256 px	Processing	Started
My movie / New Profile	101/300	256 px	224 px	256 px	256 px	Processing	Started
Julia set / New Profile	1/0	256 px	224 px	256 px	256 px	Processing	Started

Change workspace Local Spool

Job table

When you render movies, a post-elaboration job is needed.



Service window

Clips Jobs Bundles Extension Points

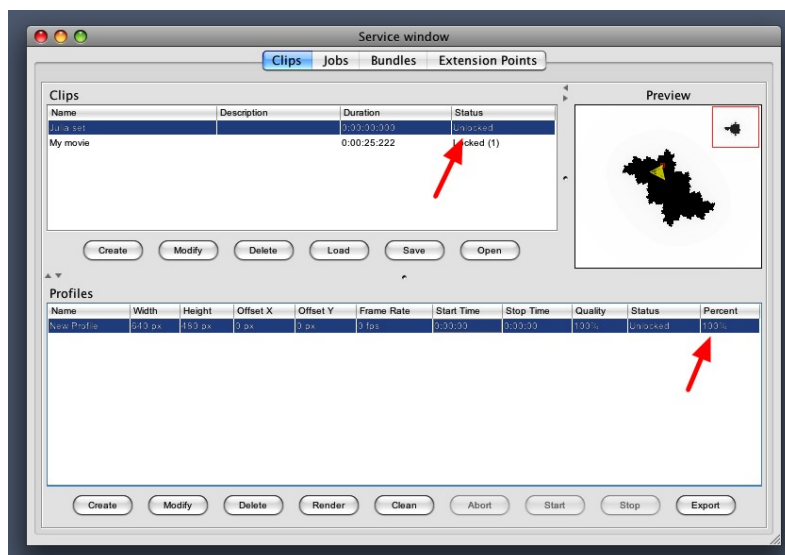
Jobs

Name	Frame	Tile Width	Tile Height	Offset X	Offset Y	Type	Status
My movie / New Profile	89/300	640 px	480 px	0 px	0 px	Post-processing	Started

Change workspace Local Spool

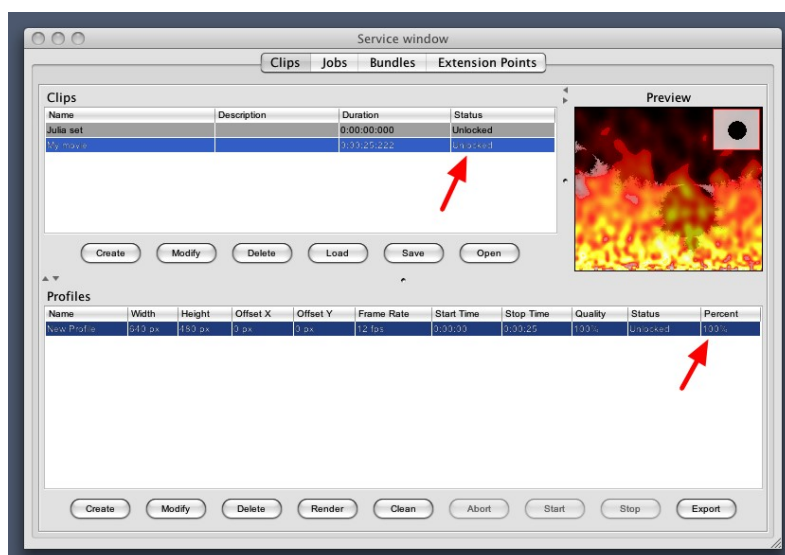
Exporting

Click on clips tab to see the profile table. The percentage column contains the percentage of the completed work.



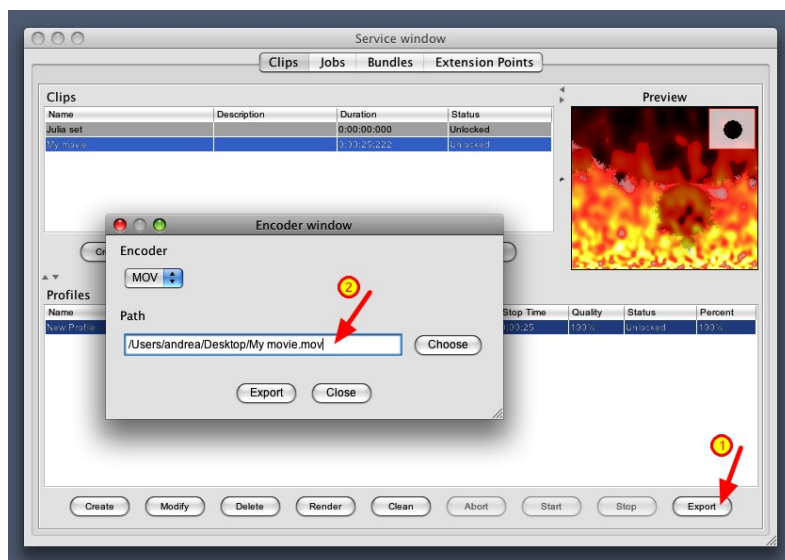
Exporting

When finished, select the movie and the first profile.



Exporting

Click on export button to export the selected profile.



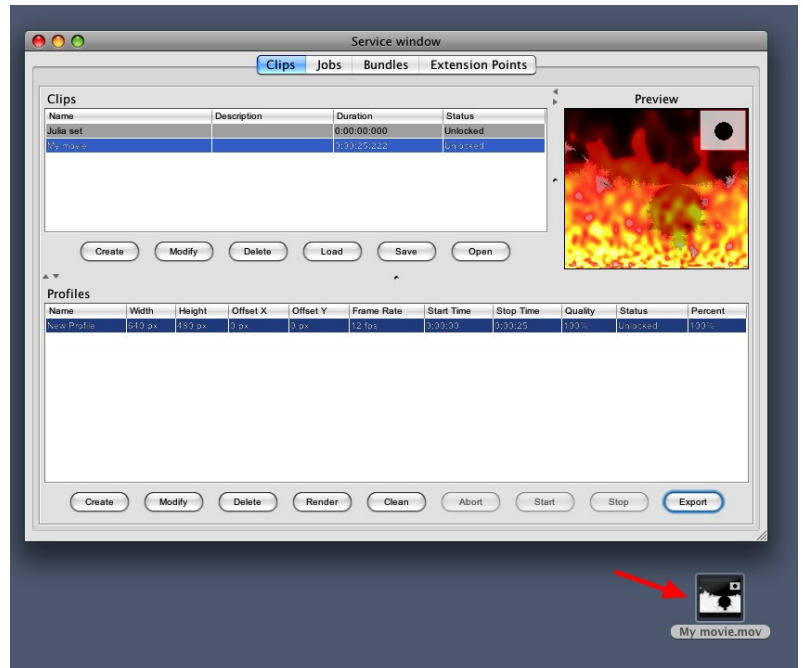
Exporting

The movie will be encoded in the selected format.



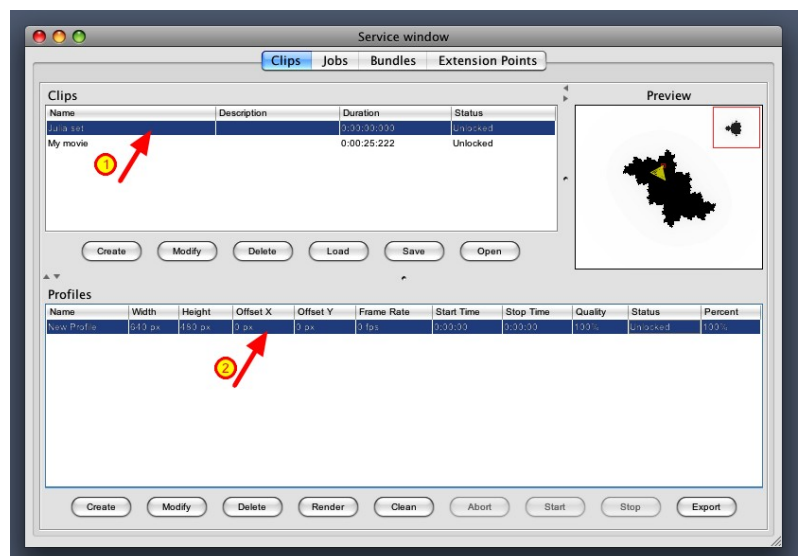
Exporting

The movie file will be created.



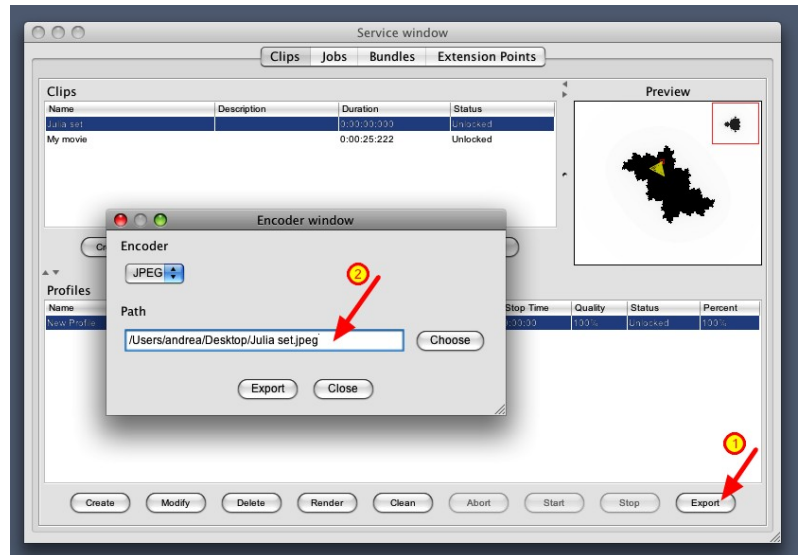
Exporting

Select the photo and the first profile.



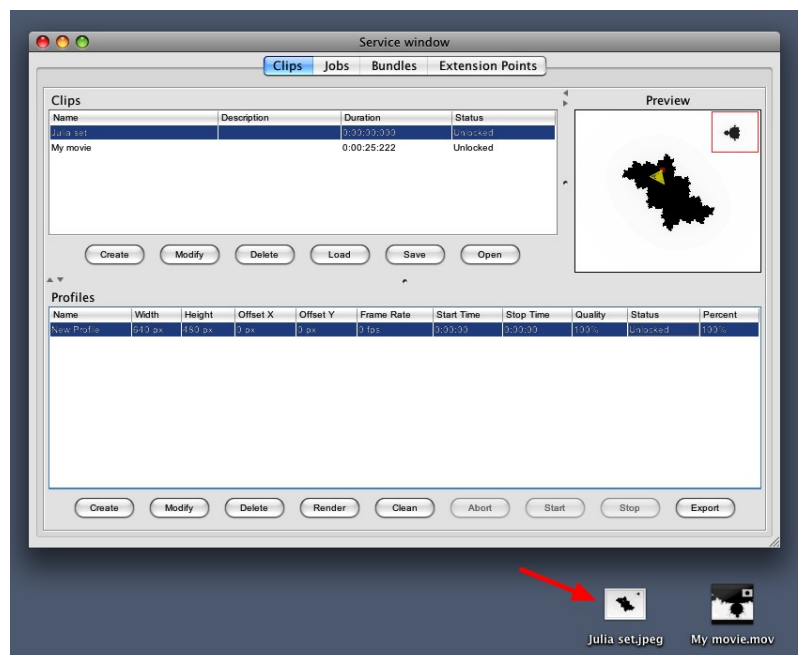
Exporting

Click on export button to export the selected profile.



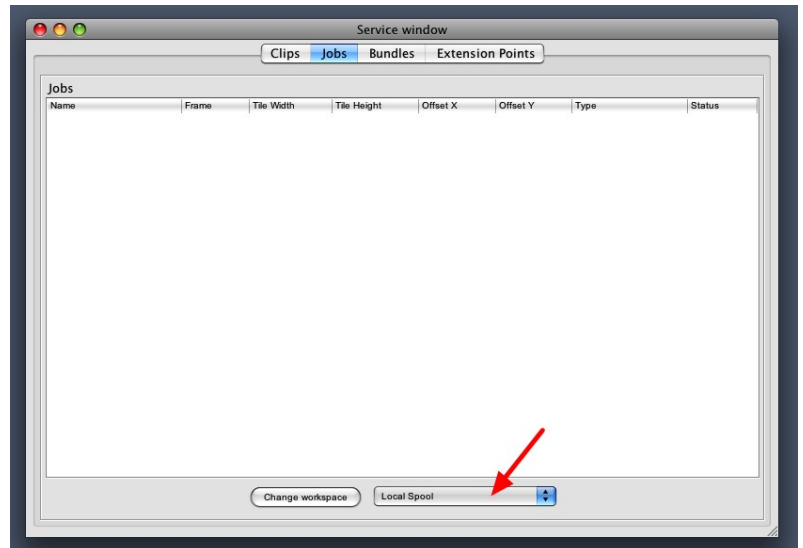
Exporting

The image file will be created.



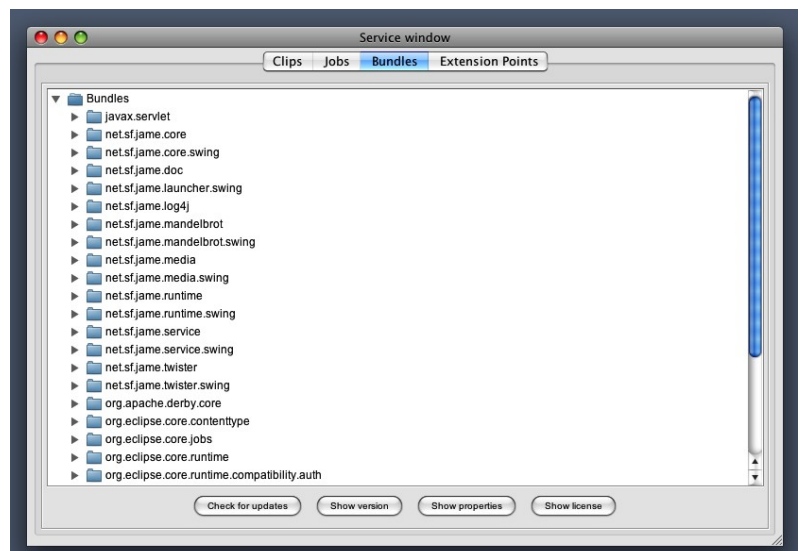
Spool service

When all the jobs are completed, you can change the spool service from the jobs tab. Different spool services will be available to provide local or distributed rendering.



Bundles

Click on bundles tab to see the bundles tree. In this tree you can see the bundles installed in your plugings folder.



Extension points

Click on extension points tab to see the extension points tree. In this tree you can see the extension points and the extensions installed in your plugins folder.

