



Version 2.0 8x20

© 2002-2006 John N. Nelson - Nelson Technical Service

## Installing Sign-In-Out 2.0 8x20

If AutoStart is selected on the computer, the Installer.exe program should start to execute when the CD is inserted in the drive. If it doesn't start, use the Windows Explorer to run the Installer.exe program in root directory of the CD-ROM drive. You should see a screen like this:



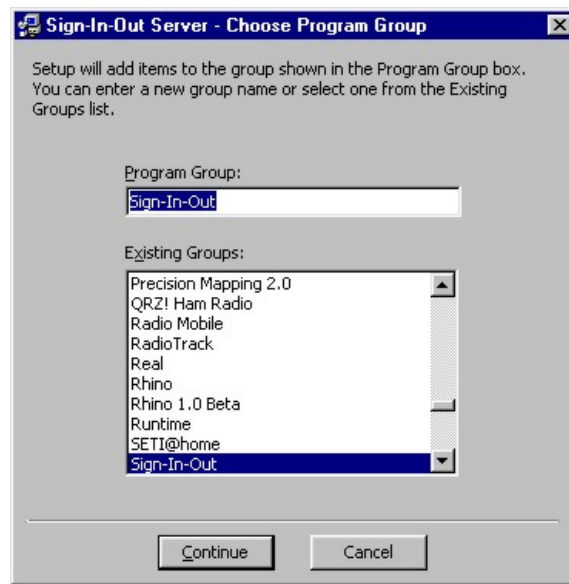
The procedures to install the Server or Client are about the same. The installation of the Server is described here. To install the server program, click on the "Install Server Program" button.



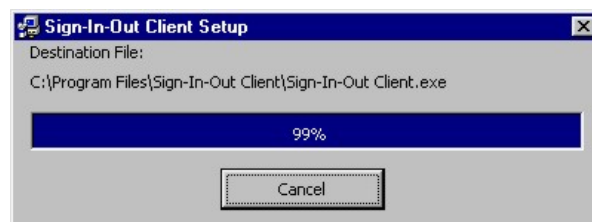
The Sign-In-Out Server Setup program will then start to run. Click on the "OK" button.



This will cause the second setup display to be shown. If you want to save the Sign-In-Out program in a directory other than the default, click on "Change Directory" and select the directory you want to use. Next, click on the icon of the computer to continue.



Next you choose the Program Group where the Sign-In-Out program will be stored. The default program group is "Sign-In-Out". Click on the "Continue" button to continue.



At this point the setup program copies files from the CD-ROM to the hard disk and creates entries for Sign-In-Out in the startup menu. A progress bar is displayed as the process continues.



Finally this window should be displayed. You have installed the Sign-In-Out Server program. Press the "OK" button.

See the "Sign-In-Out Admin.doc" file for information on configuring the Server and Client programs.

**After you install the Server program, you must enter the registration code to disable the “demo reminders”.**