

Using 'Stock Quotes in Excel' Plugin from Technitya.com

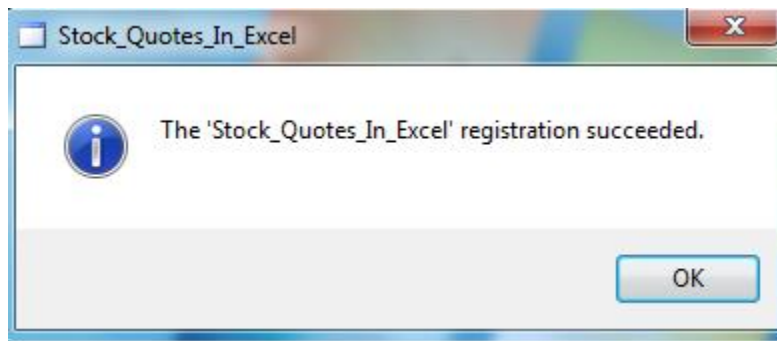
Step 1: Installing the Plugin

Installing this plugin is very easy. All that you need to do is to double click on the setup.exe file which you have received and follow the instructions on the screen.

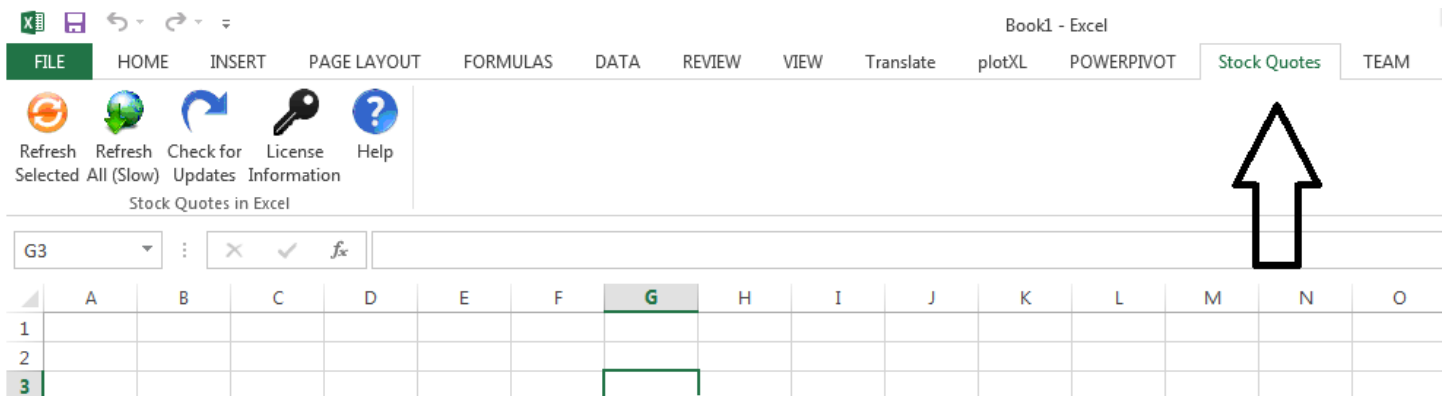
Before you install the software please...

- 1) Disable any Antivirus you may have
- 2) Install it again as an Administrator

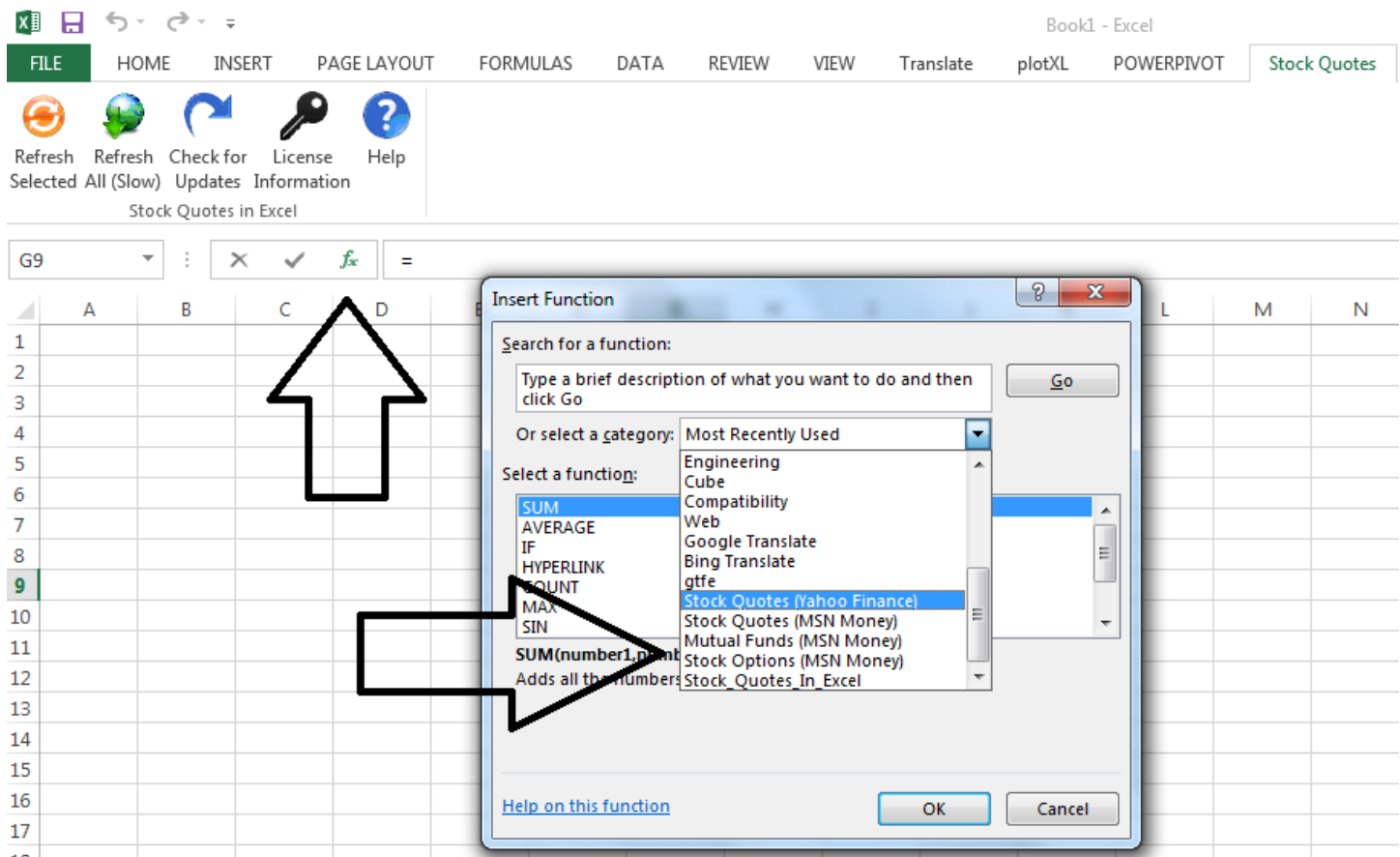
Simply follow the messages on your screen, you will see a message like the one below which suggest that the installation has been successful.



Now that you have installed the software, you can start MS Excel and you should see a new menu in Excel ribbon as shown below...(note: Excel 2003 users will not see this menu, as there was no ribbon in Excel 2003, but that's not an issue, please follow the next steps)



And, also you will notice some new function categories appearing in Excel's default list of functions.



If you see the new functions, and the menu on Excel ribbon the software is properly installed.

Step 2: Applying the License to start using the software **(Ignore this step if you are using the trial version)**

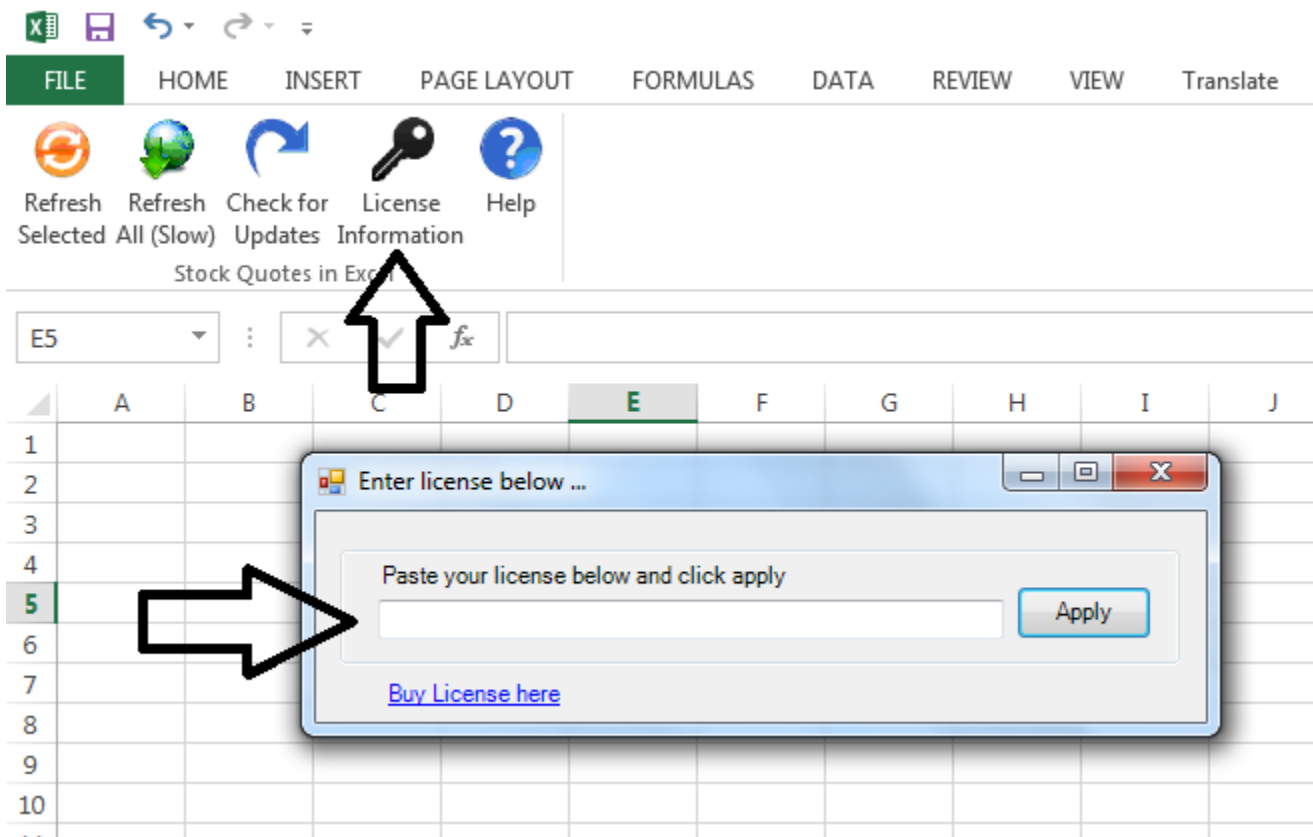
Now, that you have installed the software you will need to apply the license to the software to make sure you can use the software.

Once, you purchase the license you should receive an email which carries the license key. **In case you do not see an email immediately after your purchase please check your SPAM box.** The license key look something like below...

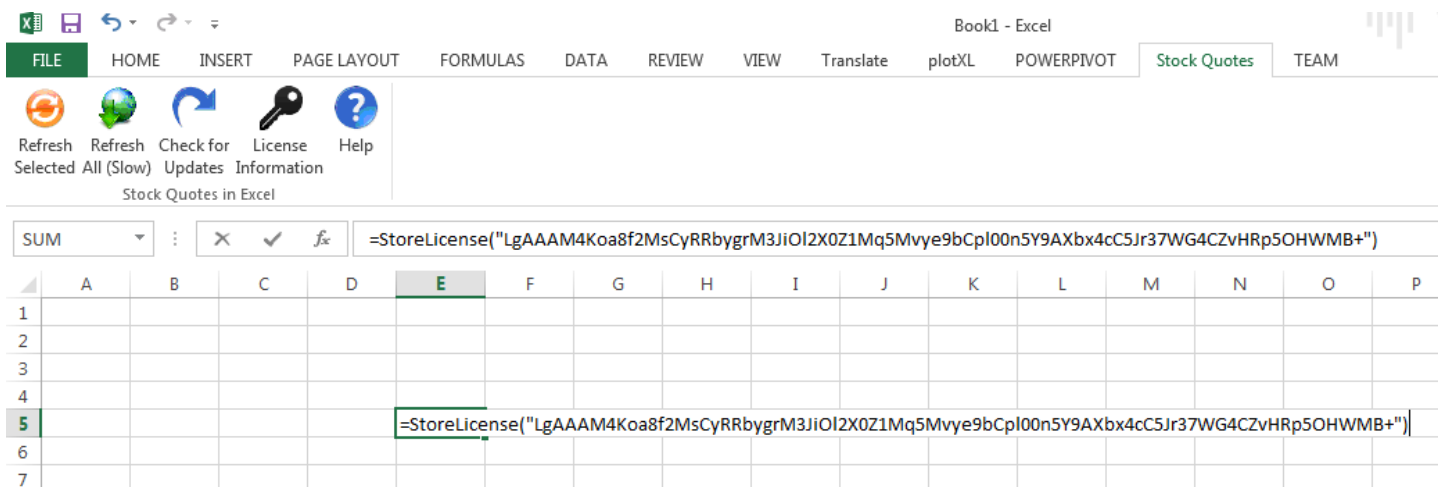
License: LgAAAM4Koa8f2MsCyRRbygrM3JiOI2X0Z1Mq5Mvye9bCpl00n5Y9AXbx4cC5Jr37WG4CZvHRp5OHWMB+

There are 2 simple ways for you to apply the license.

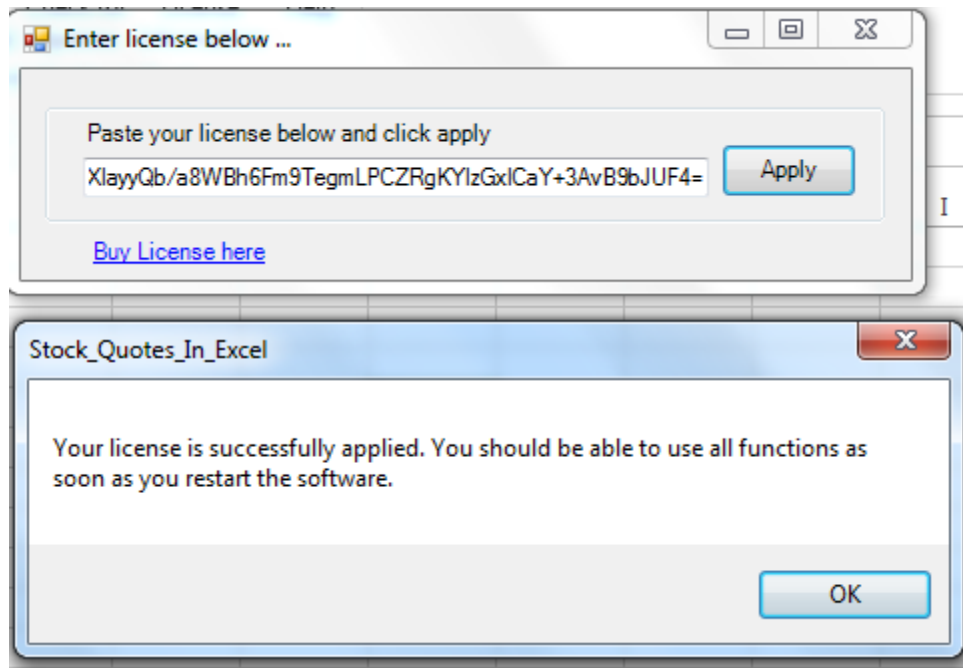
- 1) Using the menu: Click on the "License Information" button on the menu. Paste the license key in the box and click on Apply. As shown in the picture below.



- 2) Using the “StoreLicense” function: You can also use the function StoreLicense as shown in the picture below...(note: If you are using Excel 2003 this is the method to use to apply the license)



Once you have applied your license by using any of the method explained above you should see a confirmation that the license is successfully apply. See picture below...



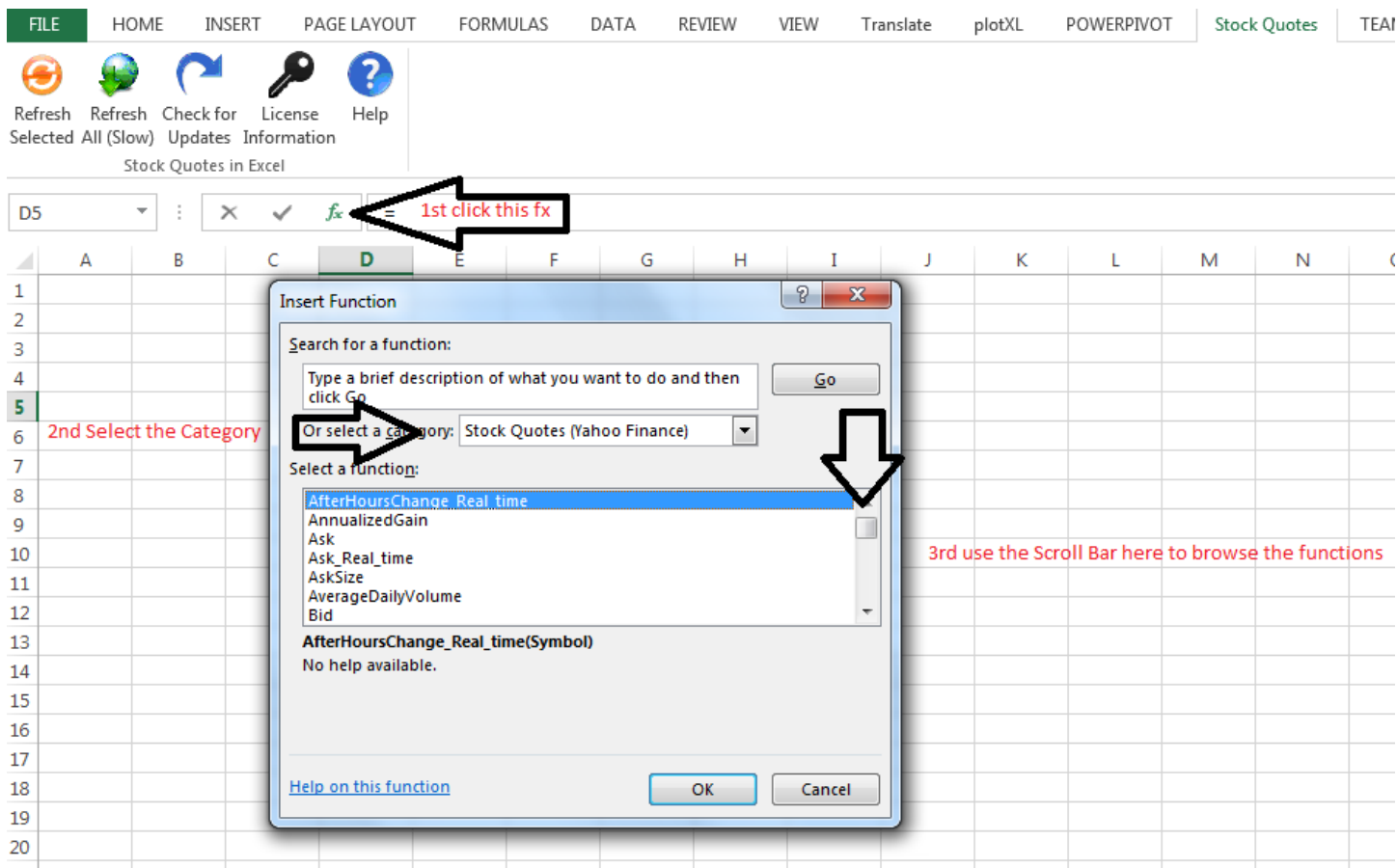
Step 3: Using the software

Now, that you have completed step 2, you are ready to use the software.

You can use functions from the various categories below...

- 1) Stock Quotes (Yahoo Finance) – This is a list of various functions which pull information from Yahoo Finance right into your Excel spreadsheet. If you were to get the latest price for a ticker, simply use function like =Ask("MSFT"). This function will return the latest price for Microsoft.

List of all the functions which are available from this category can be browsed using the Excel's in built function browser. Follow the steps as shown in the picture below to browse functions in this category.



- 2) Stock Quotes (MSN Money) – This is a list of various functions which pull information from MSN right into your Excel spreadsheet. All these functions are prefixed by MSN. If you were to get the latest price for a ticker, simply use function like =MSN_Ask("MSFT"). This function will return the latest price for Microsoft.

List of all the functions which are available from this category can be browsed using the Excel's in built function browser. Follow the steps similar to point 1 and browse to this category.

- 3) Mutual Funds (MSN Money) – This is a list of various functions which you should use when you want to pull information about Mutual Funds/Unit Trusts. All these functions are prefixed by MSN_MF (Where MF means Mutual Funds). If you were to get the latest price for a Mutual Fund, simply use function like =MSN_MF_Price("Mutual Fund Symbol").

List of all the functions which are available from this category can be browsed using the Excel's in built function browser. Follow the steps similar to point 1 and browse to this category.

- 4) Stock Options (MSN Money) – This is a list of various functions which you should use when you want to pull pricing and other information for Stock Options. All these functions are prefixed by MSN_Option.

If you were to get the latest option price for an option, simply use function like =MSN_Option_Ask("MSFT131227C00038000"). The option ticket should be complete and should look like the one you see in this example. The ticker generally will have all the information about the option like if it's Call, Put, date and stock etc.

You can use the link below by appending the stock at the end, and get the Option symbol from MSN website

<http://investing.money.msn.com/investments/equity-options?symbol=MSFT>

Please note that you must use the right symbols with the right functions to get appropriate results. If you are using Option Ask function to get the price of a stock you will get an error. The categories 1 and 2 are for the stocks, category 3 is only for Mutual Funds and the Category 4 is only for Option pricing.

There are other new categories which will be added to the list. We are working to add “Key Statistics” category in the software with which you can pull key statistics about the Stock. i.e. Shared Outstanding, Enterprise value etc.

Frequently Asked Questions

- 1) When Refresh all pricing button is clicked, does it refresh all the sheets where the quotes are or it only refreshes the active sheet.

Answer: The Refresh All – button is for a full rebuild and recalculation of all the formulas in your workbook anywhere in any sheet.

- 2) I am able to use the functions but I do not see all the categories of function in Excel’s in built function browser. What could be the problem?

Answer: Looks like the software is not installed properly. Please follow the steps below...

- * Uninstall the software
- * Disable any Antivirus you may have
- * Install it again as an Administrator

- 3) I tried MSN_Option functions but I am getting a #Value error.

Answer: You would usually get this error if you are using incorrect symbol. The best way to avoid this is to use the link below by appending the stock at the end. And get the Option symbol from MSN website

<http://investing.money.msn.com/investments/equity-options?symbol=MSFT>

- 4) I use a lot of options in my spreadsheet, is there a faster way of getting the right symbol for options when using MSN Option functions?

Answer: The option symbol builder for Yahoo and MSN is being developed and will be available soon.

- 5) What do I pay this price for and for how long?

Answer: You pay only one time fee for the license to use the software. There is no subscription or Software maintenance charges. You receive the life time license to use the software and get all the updates (for free)

- 6) I am happy with the trial version and want to buy the life time license, but will I lose any of my work which I did in an existing Excel workbook.

Answer: No, once you save your workbook, your formulas are saved and you never lose any of the data.

For any questions or support request please contact us at the link below...

<http://www.technitya.com/content/support-center>

End of the Document