



## **Bluetooth for Windows (BTW) Installation Instructions**

**September 11, 2001**

Document Number: Readme.doc (S0003-0024)

Version: 2.7

---

***Confidential and Proprietary Information***

---



*Wireless Internet and Data Communication*

9645 Scranton Road, Suite 205

San Diego, CA 92121

Phone: 858.453.8400

Fax: 858.453.5735

Email

Technical Support: [support@widcomm.com](mailto:support@widcomm.com)

Information: [info@widcomm.com](mailto:info@widcomm.com)

## BTW Installation Instructions

### LICENSED SOFTWARE

© Copyright 2000 – 2001, WIDCOMM, Inc. (“WIDCOMM”). All rights reserved.

**Warning:** This software and accompanying documentation are protected by copyright law and international treaties. Unauthorized reproduction or distribution of this software, or any portion of it, may result in severe civil and criminal penalties, and will be prosecuted to the maximum extent possible under the law.

Use of this software is governed by the terms of the end user license agreement that accompanies or is included with such software. Unless otherwise noted in the end user license agreement, or herein, no part of the documentation accompanying this software, whether provided in printed or electronic form may be reproduced in any form, or stored in a database or retrieval system, or transmitted in any form or by any means, or used to make any derivative work (such as translation, transformation, or adaptation) without the express, prior written consent of WIDCOMM.

### Trademark(s) <sup>TM</sup> and Registered Trademark(s) <sup>®</sup>

WIDCOMM and the WIDCOMM logo are trademarks of WIDCOMM, Inc.

The Bluetooth trademark is owned by the Bluetooth SIG, Inc., and used by WIDCOMM under license.

Microsoft and Windows are registered trademarks of Microsoft Corporation.

InstallShield<sup>®</sup> Wizard is a registered trademark of InstallShield Software Corporation.

Other brand and product names may be registered trademarks or trademarks of their respective holders.

## Table of Contents

<b>1</b>	<b>INSTALLING BLUETOOTH FOR WINDOWS (BTW).....</b>	<b>1</b>
1.1	SYSTEM REQUIREMENTS .....	1
1.2	UNINSTALL PREVIOUS VERSION OF BTW .....	1
1.3	INSTALL BTW .....	1
1.3.1	Windows 98 Second Edition (SE) and Windows Millennium Edition (Me) .....	1
1.3.2	InstallShield Wizard .....	1
1.4	LICENSE KEYS.....	3
1.4.1	Expired License or Unlicensed Version of BTW .....	3
	<b>APPENDIX A—INSTALLSHIELD WIZARD SCREEN SHOTS.....</b>	<b>4</b>
	<b>APPENDIX B—RELEASE NOTES.....</b>	<b>8</b>
1.1	BTW 1.1.0.1 .....	8
1.2	BTW 1.1.23 .....	8
1.3	BTW 1.1.22 .....	8
1.4	BTW 1.1.21 .....	8
	BTNeighborhood.....	8
1.5	BTW 1.1.19 .....	8
	BTStackServer.....	8
	BTNeighborhood.....	8
	BTStackServer.....	8
1.6	BTW 1.1.18 .....	9
	Installer .....	9
1.7	BTW 1.1.17 .....	9
	Installer .....	9
1.8	BTW 1.1.16 .....	9
	Control Panel.....	9
	Installer .....	9
1.9	BTW 1.1.15 .....	9
	BTTray.....	9
1.10	BTW 1.1.14 .....	9
	BTTray.....	9
1.11	BTW 1.1.13 .....	9
	BTStackServer.....	9
	BTNeighborhood.....	9
1.12	BTW 1.1.12 .....	10
	Bluetooth Neighborhood.....	10
	BTTray.....	10
	BTStackServer.....	10
	Control Panel.....	10

## List of Figures

Figure 1:	Widcomm Bluetooth Software License dialog box. ....	3
Figure 2:	Start-up dialog box. ....	4
Figure 3:	Welcome screen. ....	4
Figure 4:	Remove the Program screen. ....	4
Figure 5:	Uninstalling the previous version of BTW screen. ....	5
Figure 6:	License Agreement screen. ....	5
Figure 7:	Customer Information screen. ....	5
Figure 8:	Device Information screen. ....	6
Figure 9:	Destination Folder screen. ....	6
Figure 10:	Change Current Destination Folder screen. ....	6
Figure 11:	Ready to Install the Program screen. ....	7
Figure 12:	Installing Widcomm Bluetooth Software screen. ....	7
Figure 13:	InstallShield Wizard Completed screen. ....	7

## 1 Installing Bluetooth for Windows (BTW)

### 1.1 SYSTEM REQUIREMENTS

Bluetooth for Windows (BTW) runs under Microsoft® Windows® 2000, Windows 98 Second Edition (SE), and Windows Millennium Edition (“Me”).

### 1.2 UNINSTALL PREVIOUS VERSION OF BTW

Any previous version of the BTW software must be uninstalled before installing an upgraded version.

There are two ways to remove BTW:

1. The InstallShield® Wizard automatically uninstalls the previous version when a new version is installed.
2. Manually uninstall BTW by completing these steps:
  - a) Close any open applications.
  - b) From the Windows taskbar, click **Start** followed by **Settings** followed by **Control Panel**.
  - c) Double-click **Add/Remove Programs**.
  - d) On the *Add/Remove Programs* window, select the Widcomm Bluetooth Software entry. Scroll down if necessary.
  - e) Click the **Change/Remove** button (Windows 2000). The InstallShield Wizard is started.
  - f) Click **OK** on the *Confirm File Deletion* window to remove the Widcomm Bluetooth Software and all of its components.
  - g) When prompted, click **Restart** and then click the **Finish** button.

### 1.3 INSTALL BTW

#### 1.3.1 Windows 98 Second Edition (SE) and Windows Millennium Edition (Me)

BTW requires that a number of Microsoft® Windows® networking components be installed before BTW can be successfully configured.

If Windows 98SE or Windows Me was installed without the networking components, have the MS Windows CD available during the BTW installation process.

Under normal Windows 2000 installations you should not be prompted for the Windows CD, however you may want to have it on hand.

#### 1.3.2 InstallShield Wizard

Installing BTW is an automated process made easy by the use of the InstallShield Wizard. You will need to:

- Read and acknowledge the License Agreement.
- Fill in some customer information, including the License Key.  
(See also Section 1.4.)
- Fill in some device information.
- Make a few choices

InstallShield will uninstall the previous version of BTW, copy the required files, install drivers and virtual COM ports, set up the system registry, and register services.

Screen shots of the InstallShield Wizard installation windows are included in Appendix A, beginning on page 4, for your review if necessary.

Complete these steps to install BTW:

1. Exit all applications.
2. Insert the WIDCOMM BTW CD. The auto-run option will start and the InstallShield Wizard setup dialog box (Figure 2) is displayed. If auto-run does not occur, manually start the setup process—from the Windows taskbar, click **Start** followed by **Run** and select `setup.exe` on the CD.
3. Follow the instructions on the screen:
  - a) On the *Welcome* screen (Figure 3), click the **Next** button.
  - b) (Skip this step if you have already uninstalled any previous version of BTW; see also Section 1.2) Should InstallShield Wizard find a previous version of BTW on the personal computer, it will attempt to uninstall it. On the *Remove the Program* screen (Figure 4), click the **Remove** button. The *Uninstalling Widcomm Bluetooth Software* screen (Figure 5) displays the uninstall process progress. When complete, the system will reboot. Start the install process again, beginning at step 1.
  - c) When the *License Agreement* screen is displayed, read the License Agreement, then click the radio button (Figure 6) to the left of “I accept the terms in the license agreement” and click the **Next** button.
  - d) On the *Customer Information* screen (Figure 7), enter the required information:
    - A User Name, for example, *John Smith*.
    - An Organization name, for example, *ABC Software*.
    - The License Key provided by WIDCOMM (see Section 1.4—License Keys, for additional information). The format is:  
XXXXXXXX-XXXXXXXX-XXXXXXXX-XXXXXXXX.
    - Click the **Next** button.
  - e) On the *Device Information* screen (Figure 8), enter the required information:
    - Device Name—other Bluetooth-enabled devices, when inquiring about devices within radio range, will see this user-configured device name. The name can be changed after the installation process through the BTW Configuration Panel.
    - Device Type—click the down arrow ▼ and choose **Desktop** or **Laptop** from the drop-down list. The device type can be changed after the installation process through the BTW Configuration Panel.
    - Click the **Next** button.
  - f) On the *Destination Folder* screen (Figure 9), click the **Change** button to browse to a new destination folder for the BTW software (Figure 10). Otherwise, click the **Next** button to accept the default folder.
  - g) The InstallShield Wizard is ready to install the BTW software. If you need to review or change any settings, click the **Back** button. Click the **Cancel** button to exit the Wizard. Otherwise, click the **Install** button (Figure 11). The *Installing Widcomm Bluetooth Software* screen (Figure 12) displays the installation progress. If prompted to insert the Windows CD, do so and follow the on-screen instructions.
  - h) When the installation has complete, click the **Finish** button (Figure 13) on the *InstallShield Wizard Completed* screen.

## 1.4 LICENSE KEYS

If you have a licensed version of BTW, WIDCOMM will provide a License Key in the format of:

XXXXXXXX-XXXXXXXX-XXXXXXXX-XXXXXXXX

The License Key must be entered on the *Customer Information* screen (Figure 7, page 5) of the InstallShield Wizard.

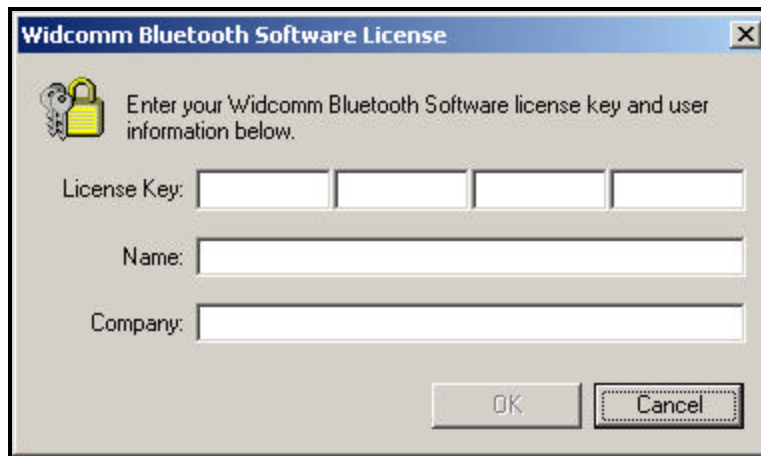
For some installations, you may not be prompted for the license key as it will have been provided through a `license.dat` file that is automatically checked by the InstallShield Wizard.

### 1.4.1 Expired License or Unlicensed Version of BTW

If your BTW license expires or you have installed an unlicensed version of BTW, the dialog box shown in Figure 1 will be displayed when BTW is started.

To renew your license or obtain a license key, contact WIDCOMM's Technical Support by e-mail at: [support@widcomm.com](mailto:support@widcomm.com).

Figure 1: Widcomm Bluetooth Software License dialog box.

The image shows a Windows-style dialog box titled "Widcomm Bluetooth Software License". It features a yellow padlock icon on the left. The text inside says "Enter your Widcomm Bluetooth Software license key and user information below." There are three input fields: "License Key:" which is divided into four separate boxes, "Name:", and "Company:". At the bottom right, there are two buttons: "OK" and "Cancel".

Widcomm Bluetooth Software License

Enter your Widcomm Bluetooth Software license key and user information below.

License Key:

Name:

Company:

OK Cancel

## Appendix A—InstallShield Wizard Screen Shots

Appendix A contains screen shots of the InstallShield Wizard as it is displayed during the installation of Bluetooth for Windows. The illustrations have been reduced in size.

Figure 2: Start-up dialog box.



Figure 3: Welcome screen.

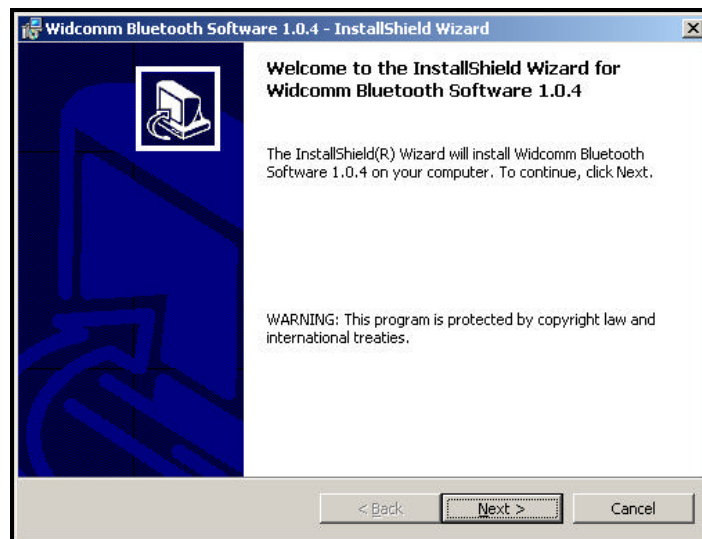


Figure 4: Remove the Program screen.

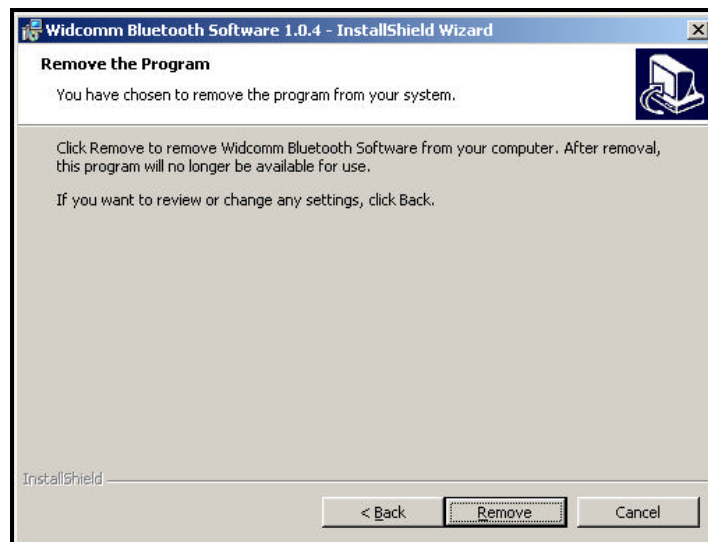




Figure 5: Uninstalling the previous version of BTW screen.

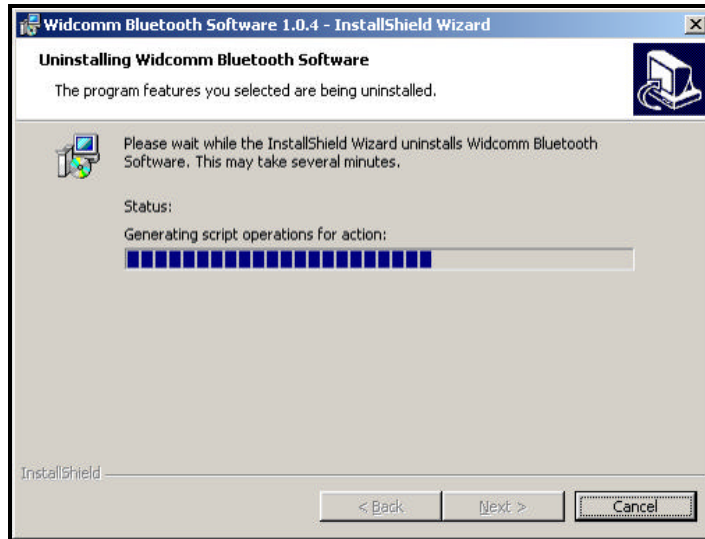


Figure 6: License Agreement screen.

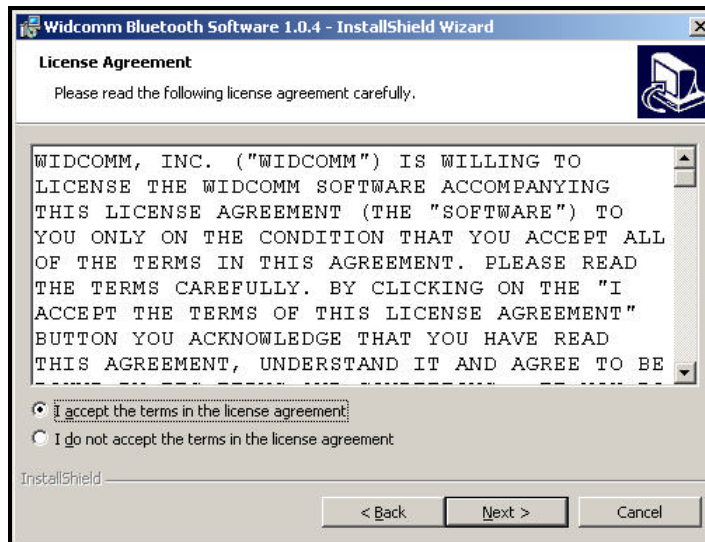


Figure 7: Customer Information screen.

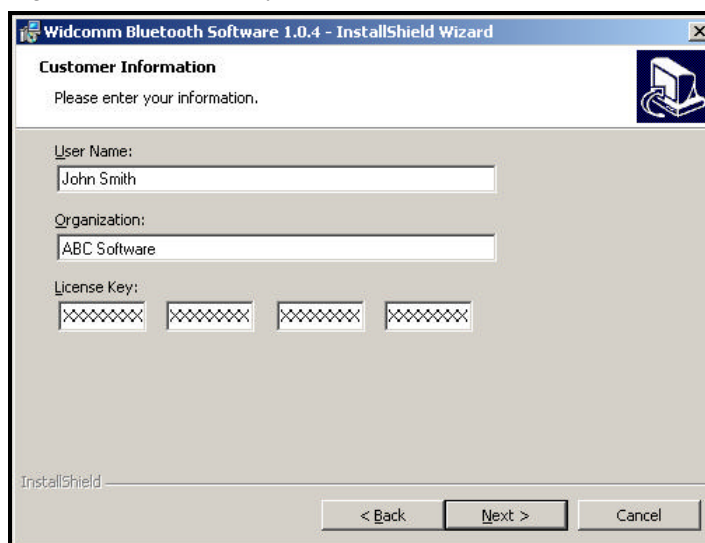


Figure 8: Device Information screen.

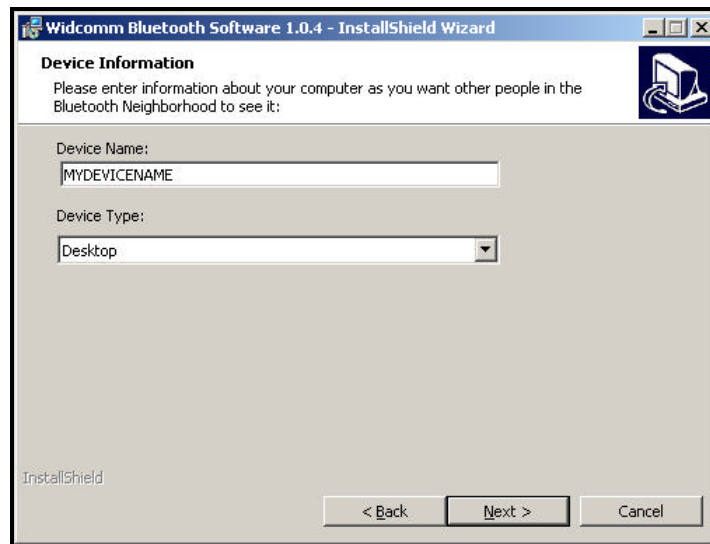


Figure 9: Destination Folder screen.

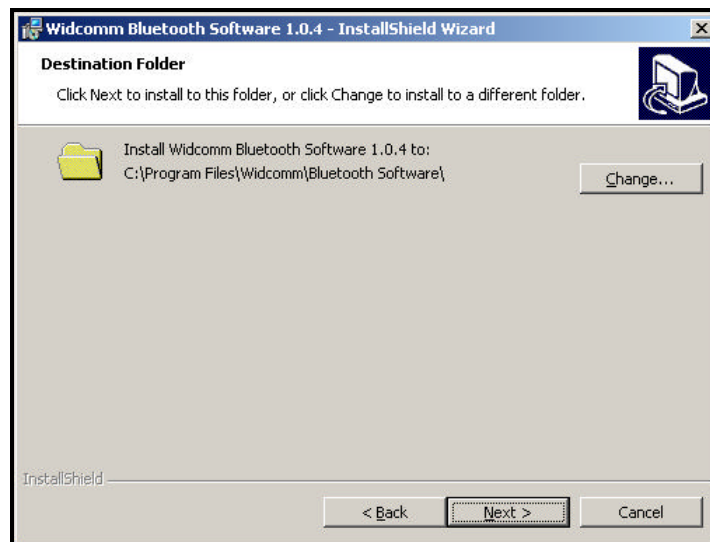
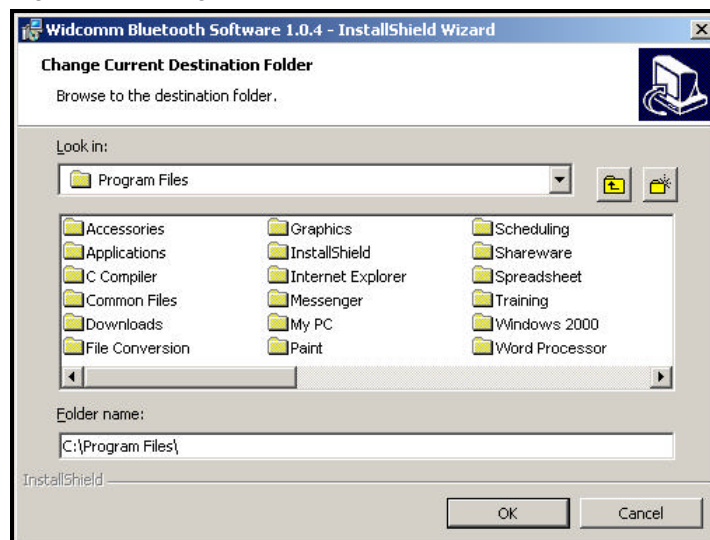
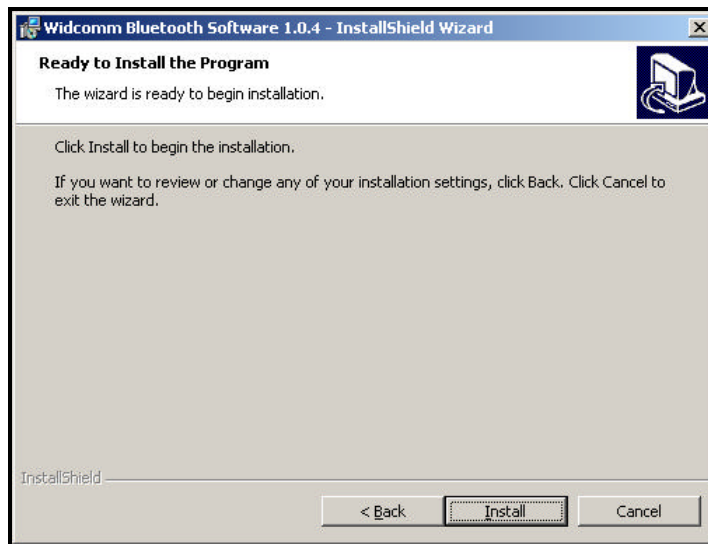
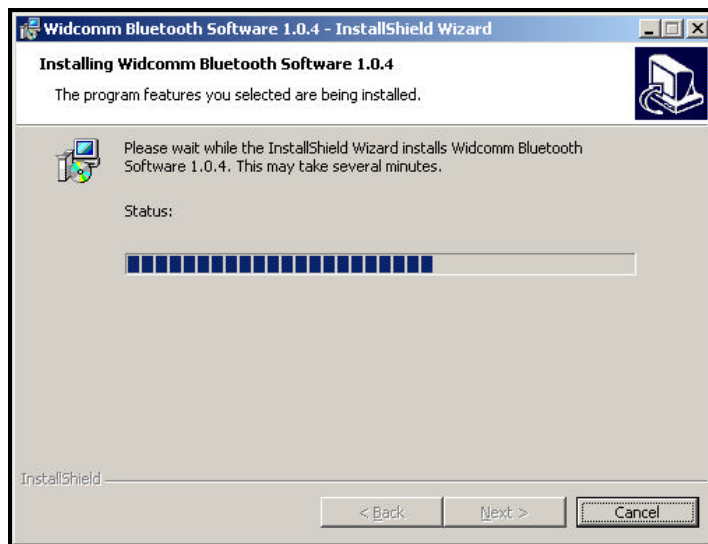
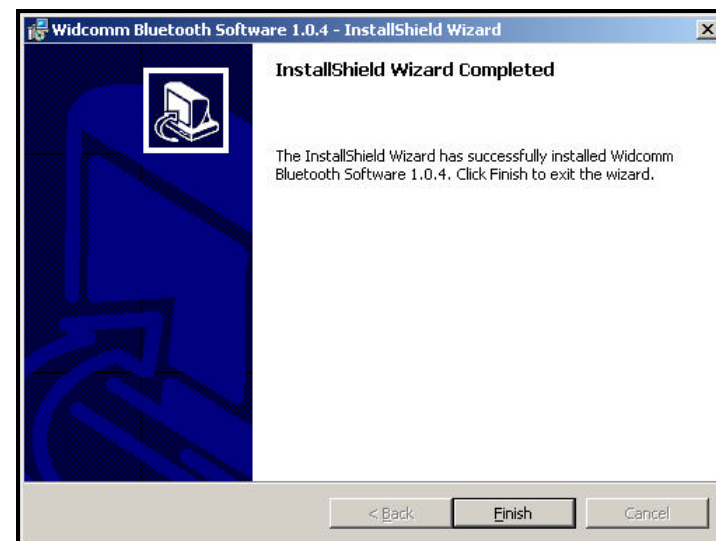


Figure 10: Change Current Destination Folder screen.



*Figure 11: Ready to Install the Program screen.**Figure 12: Installing Widcomm Bluetooth Software screen.**Figure 13: InstallShield Wizard Completed screen.*

## Appendix B—Release Notes

### 1.1 BTW 1.1.0.1

- Under certain circumstances, paired devices were not showing connection status correctly. That problem is fixed.

### 1.2 BTW 1.1.23

- FTP problem of copying files from and to network folders is fixed.
- Fixed context menu display problem when focus is on root level in Bluetooth Neighborhood.

### 1.3 BTW 1.1.22

- OBEX may need to fragment messages when peer's MTU size is smaller than local MTU. In this case OBEX puts Connection ID header in the first fragment and fails to do it for consecutive fragments.
- Modified FTP client and server not to allow standby while transfer is active.

### 1.4 BTW 1.1.21

#### BTNeighborhood

- Right mouse drag/drop move will move the files/folders from user's machine to remote machine. Note : Use of Cut/Paste or Cut/Paste from remote machine to local machine works properly. Use of Cut/Paste or Copy/Paste from local machine to remote machine still does a copy not a move.
- Sharing violation when cutting and pasting is now fixed.

### 1.5 BTW 1.1.19

#### BTStackServer

- At startup TX power as well as maximum TX power are set.
- Used to add a new record to the SDP database if a service with a new handle was found on the remote device. It could cause duplicate services if a service was stopped and started on the server. Fixed the problem by not entering found record in the SDP database.
- Standby/Hibernate not allowed when FTP, OPP or Sync is active. Improper Standby/Hibernation is observed on some lab Desktops. Standby/Hibernation was successful for services FTP, OPP or Sync on Compaq Laptops.
- Remote names are now saved in the registry when reported during the inquiry or service discovery.

#### BTNeighborhood

- Paired devices now display correctly.

#### BTStackServer

- Files are now removed if FTP operation is aborted, no error code is sent to client if get fails due to an abort.
- The auto connect timeout for Serial Based profiles has been changed from 1 to 2 minutes.

**1.6 BTW 1.1.18**

- Bug fixed in objects for reading registry, if item name doesn't exist an error is not returned. This fixed a problem during installation where an empty SPP service was added.
- Release note format has been updated to include previous releases.

**Installer**

- BTServerSpyLite help files have been removed from installer project file.

**1.7 BTW 1.1.17****Installer**

- When reading services from registry default location is changed to HKLM, this fixes bug with DUN and FAX not being configured.
- If either FAX or DUN services are removed from registry settings of installer a SPP service with no name will be added, this will be fixed in a future release.

**1.8 BTW 1.1.16****Control Panel**

- Fixed problem with accessing NULL pointer when service was in registry without its UUID being set.

**Installer**

- Services not in the registry when installed are no longer added by btinstall.dll.

**1.9 BTW 1.1.15****BTTray**

- BTTray icon will no longer become invisible if license type is for a device and the device is unplugged.

**1.10 BTW 1.1.14****BTTray**

- If license type is for a particular VID and the device is not present then BTTray icon will not be visible. If the device is plugged in BTTray icon will become visible, if it is unplugged it will become invisible.

**1.11 BTW 1.1.13****BTStackServer**

- Encoding and decoding of OBEX file names is now fixed.

**BTNeighborhood**

- When right clicking Applications are displayed in contextual menu only if they are also in the registry.

**1.12 BTW 1.1.12**

- License dialog is only displayed at startup if license has expired and is only displayed once.
- Selecting Authorization under service properties no longer clears out the pairing under Bluetooth security.
- Sending or receiving different language titled folder or files between different language and English computers is not supported.
- Service discovery on a second user device that was set a high security by the first user, prompts for passkey.
- When 'Save to PIM' is checked, Business cards are also being received in previously set default folder.

**Bluetooth Neighborhood**

- When Authentication fails, only 1 dialog is now displayed.
- WIN98SE and ME now display a dialog when more than 1 DialUp connection is attempted.
- The green device connected icon now stays green longer.
- Correct device icon is displayed at top of BTNeighborhood when device is a laptop.
- The status of sent OPP items now appears in a message box.
- After canceling FTP Get a few times, the following FTP connections fail and need to reboot the both machines.

**BTTray**

- Help button in PIN Code dialog now works correctly.

**BTStackServer**

- Canceling a Synchronization operation no longer causes a crash.
- LAP connection attempt no longer causes a system crash if the server IP sharing is unchecked.
- Changes made to sync security requires reboot before changes take effect.

**Control Panel**

- Bluetooth Configuration Panel does not display license expired anymore.
- Bluetooth Configuration Panel is now displayed when BTTray is double clicked.
- New serial services have Startup checked by default when these are added.
- Changing "Bluetooth Serial Application" settings now enables Apply button.
- Discovery tab no longer allows adding multiple class filters of the same type.